



## Land & Forests

---

### Land Designations that Contribute to Conservation in B.C.

Land designations that contribute to conservation are spatially-defined areas established through legislation or purchased for the protection of nature and cultural values, the conservation of biological diversity and ecosystem services and the management of natural resources. For example, conservation land designations include areas established as parks, areas identified to protect species at risk or cultural heritage, and areas that are identified to manage the balance of nature conservation and economic opportunities. This indicator reports on the status of land designations that are intended to contribute to conservation in British Columbia.

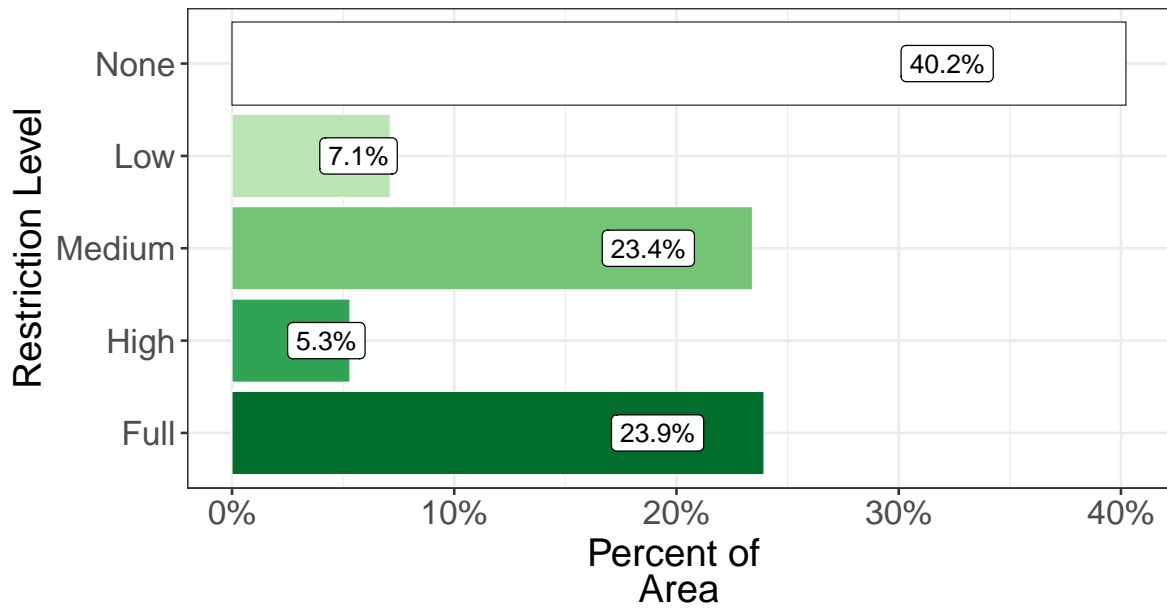
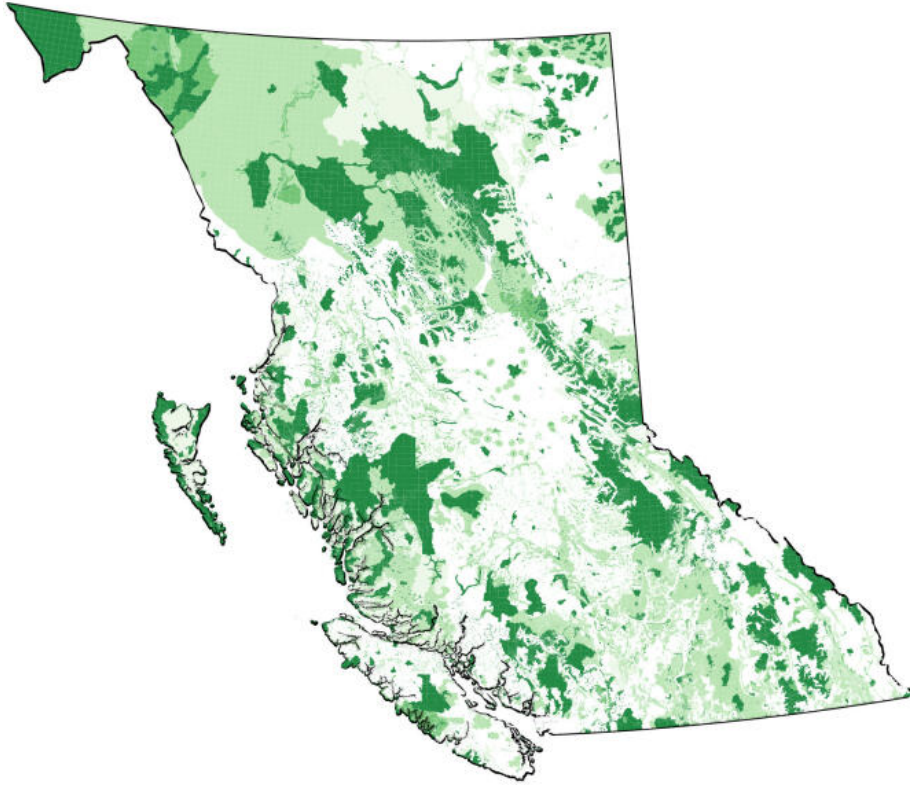
- Land designations that contribute to conservation are summarized in three categories: **Protected Lands, Resource Exclusion Areas and Spatially Managed Areas**. The three categories span a considerable range in contribution to conservation, with variation in purpose, scope and strength—with respect to intended conservation outcomes—and length of the term of the designations.
- **Protected Lands**—covering 15.4% of British Columbia—includes all **Parks & Protected Areas** (15.0%) and **Other Protected Lands** (0.4%) with the *primary* purpose of the *long-term* conservation of nature and cultural values.
- **Resource Exclusion Areas**—covering 12.4% of B.C.—includes all designations that fully exclude one or two resource activities for the purpose of conservation.
- **Spatially Managed Areas**—currently covering 24.5% of B.C.— includes all spatial designations managing or limiting development or a resource activity for the purpose of conservation, or a spatial management regime in place to preserve specified elements of biodiversity but where activity is still allowed to occur. The designations within this category vary significantly in purpose and scope of management.
- More detail on the land designations that contribute to conservation and the three categories are provided in the Details section below.

#### Protected Lands in British Columbia

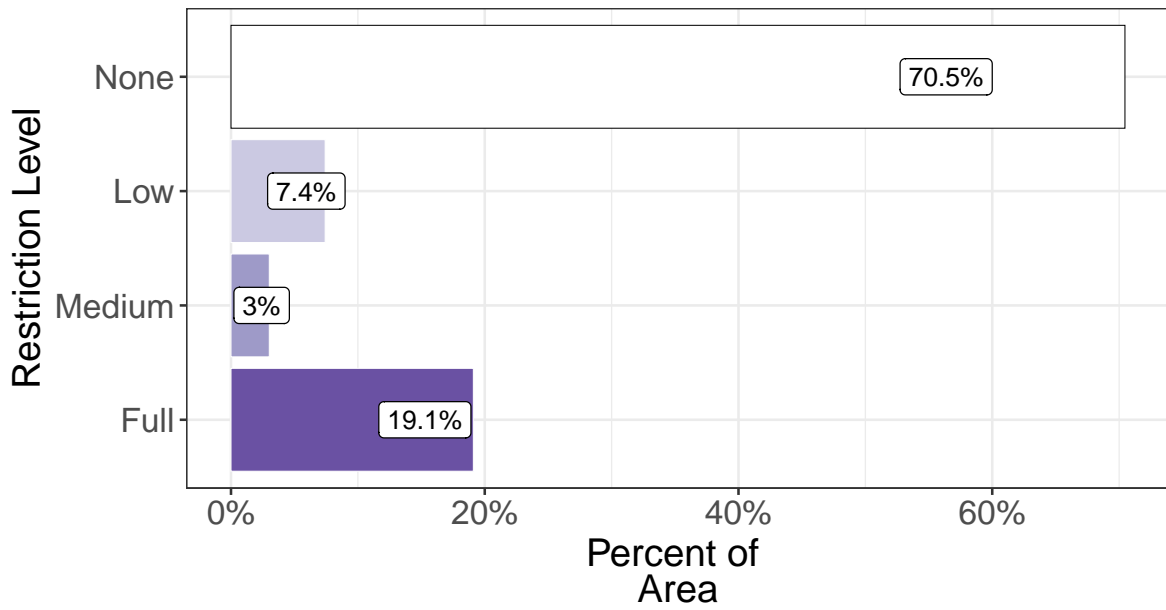
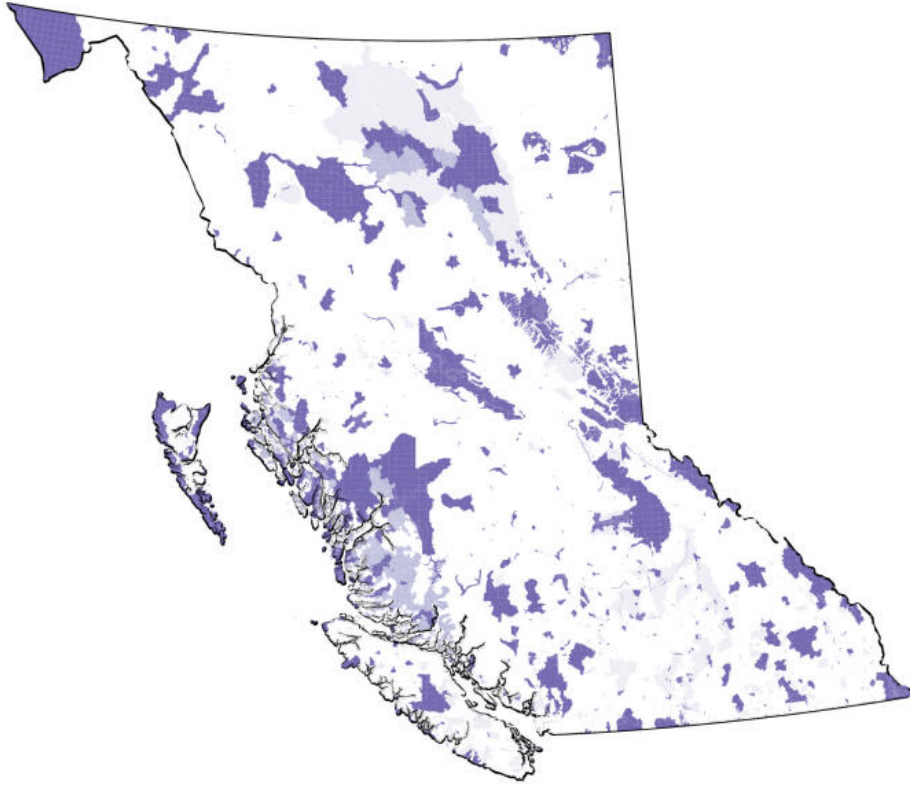
15.4% of lands in B.C. are protected through legally established areas designated for the *primary* purpose of the *long-term* conservation of nature and cultural values.

[Learn more about Protected Lands & Waters in B.C.](#)

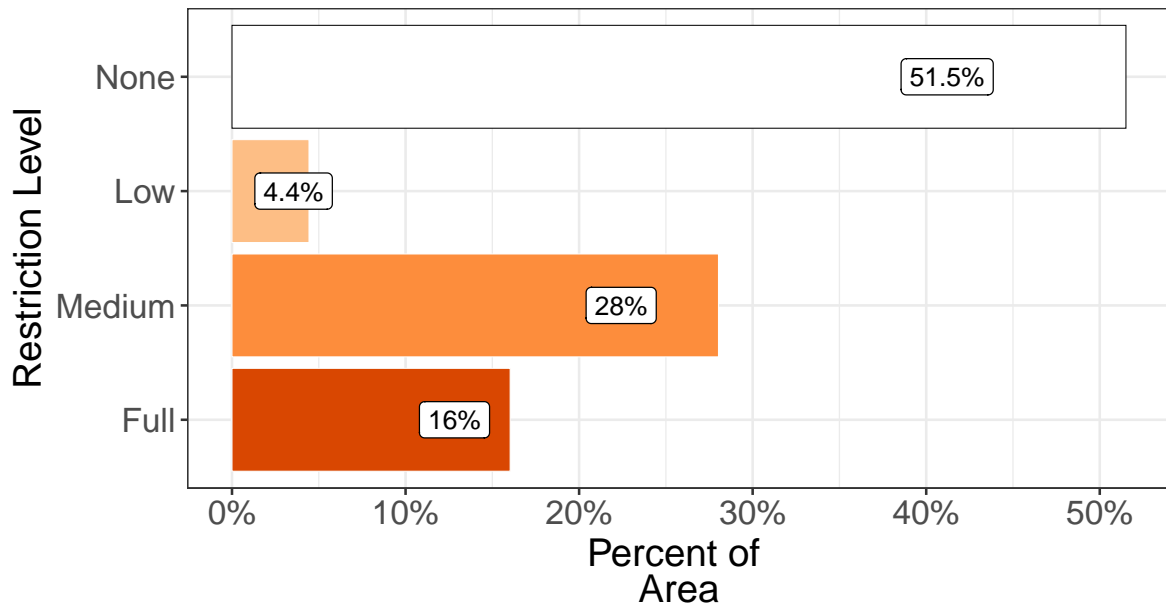
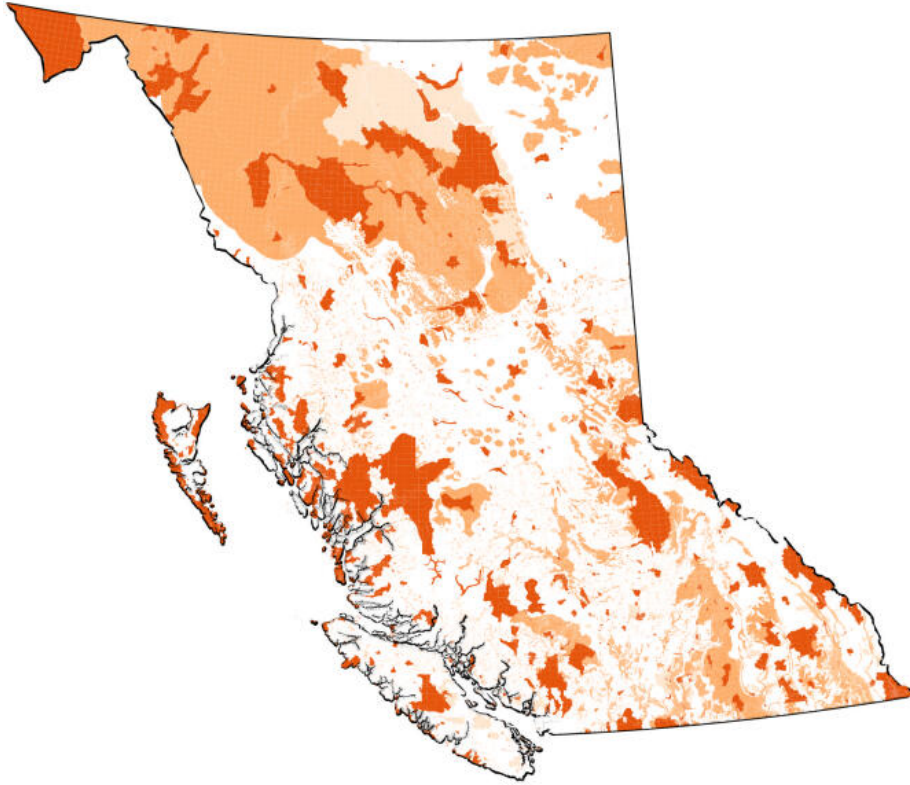
Provincial Map of Forestry Restriction Land Designations (2022)



Provincial Map of Mining Restriction Land Designations (2022)



Provincial Map of Oil and Gas Restriction Land Designations (2022)

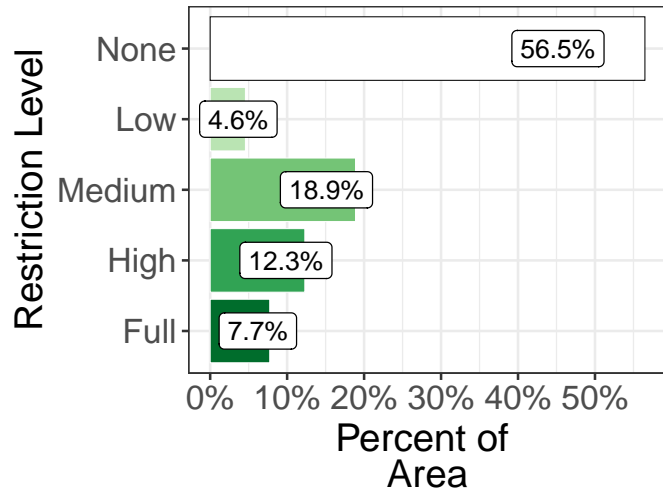
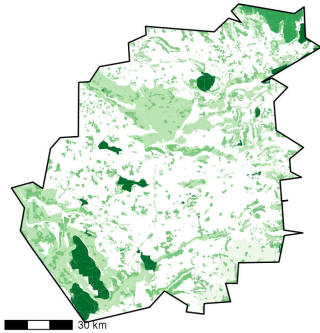


## Appendix

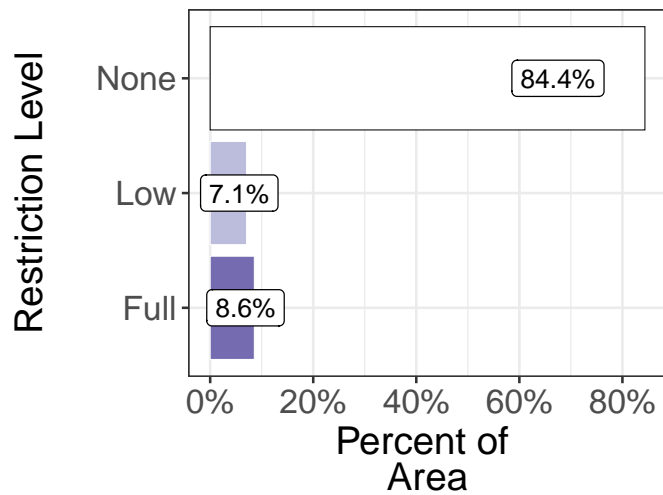
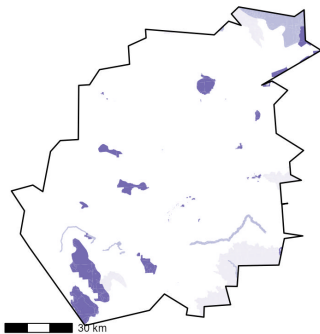
The following figures detail the land designations of the three described industries (forestry, mining, and oil and gas) for each natural resource district individually.

100 Mile House Natural Resource District

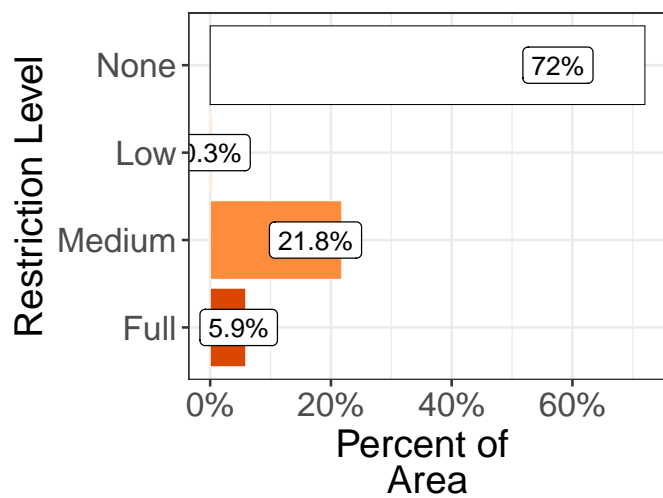
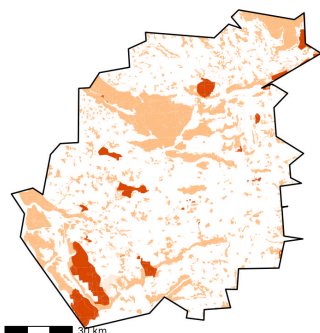
Forestry (2022)



Mining (2022)

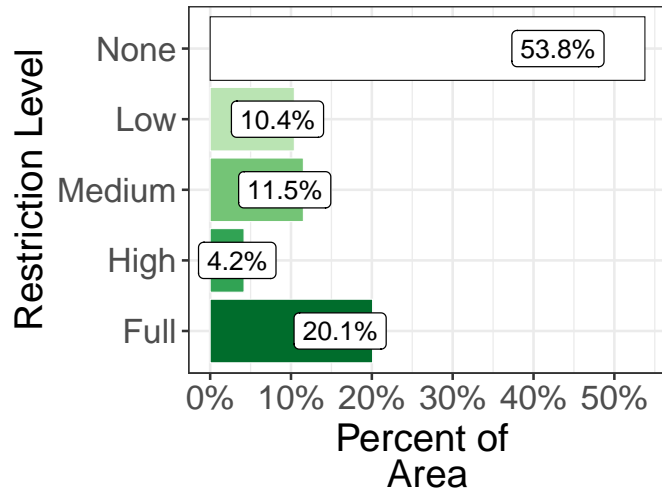
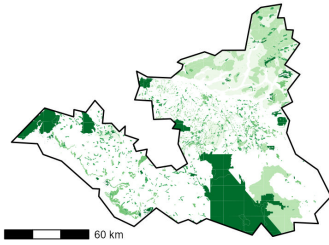


Oil and Gas (2022)

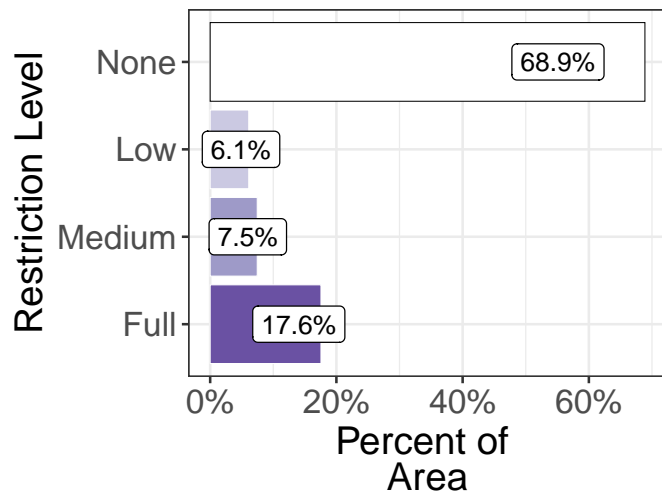
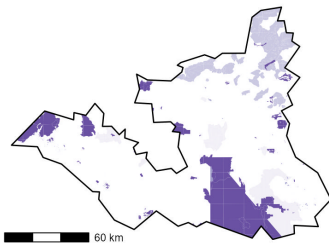


Campbell River Natural Resource District

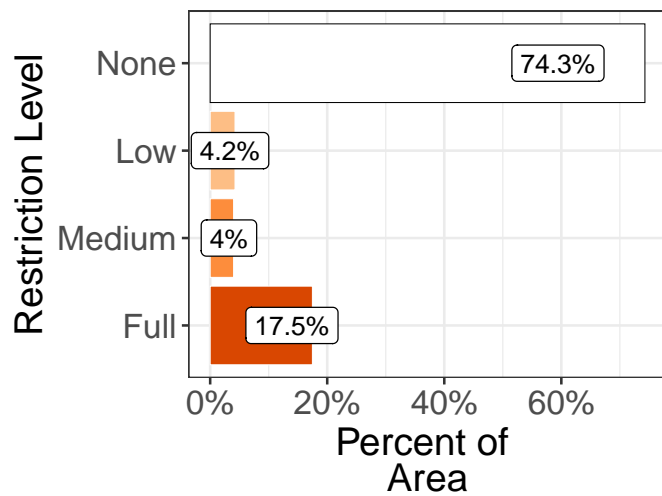
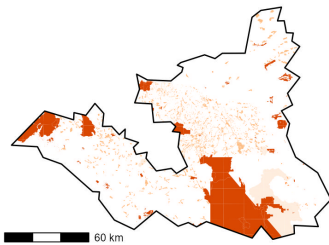
Forestry (2022)



Mining (2022)

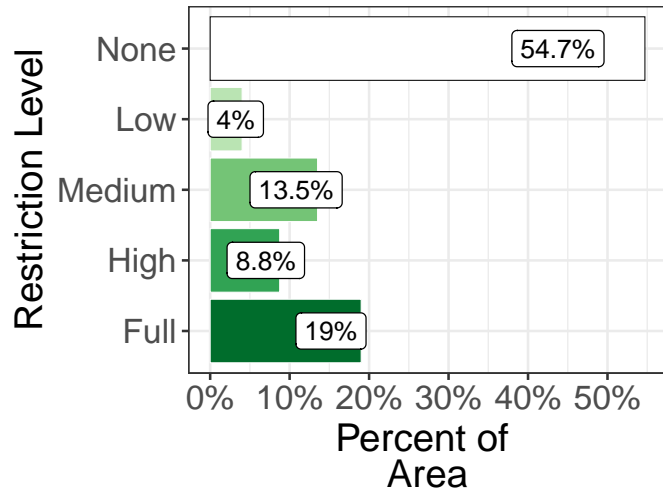
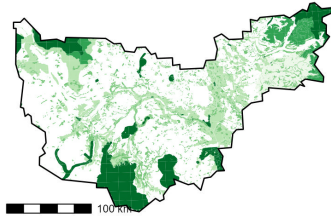


Oil and Gas (2022)

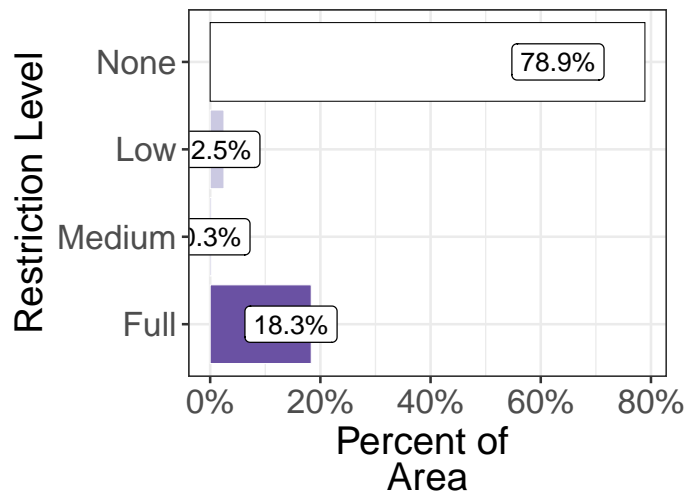
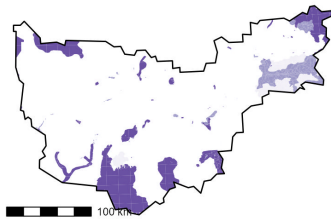


Cariboo–Chilcotin Natural Resource District

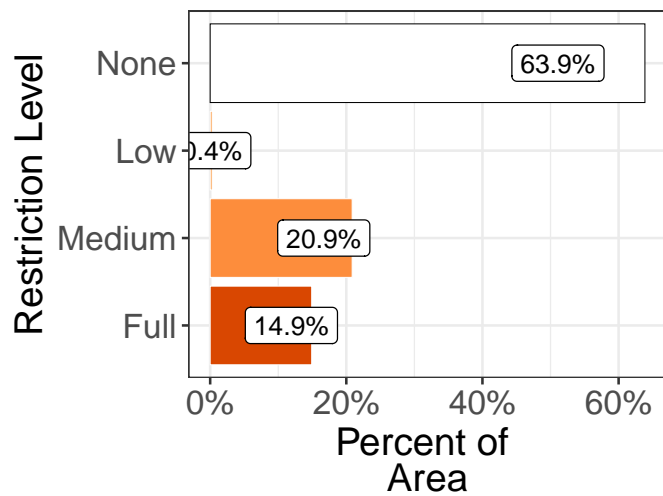
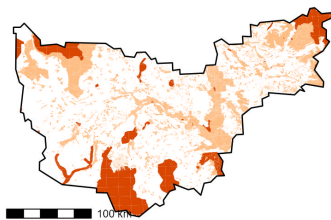
Forestry (2022)



Mining (2022)



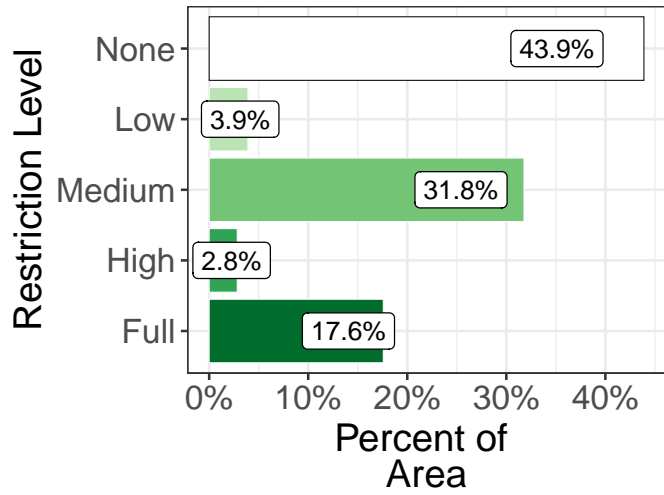
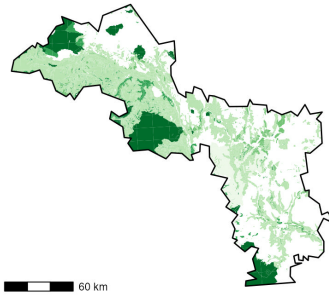
Oil and Gas (2022)



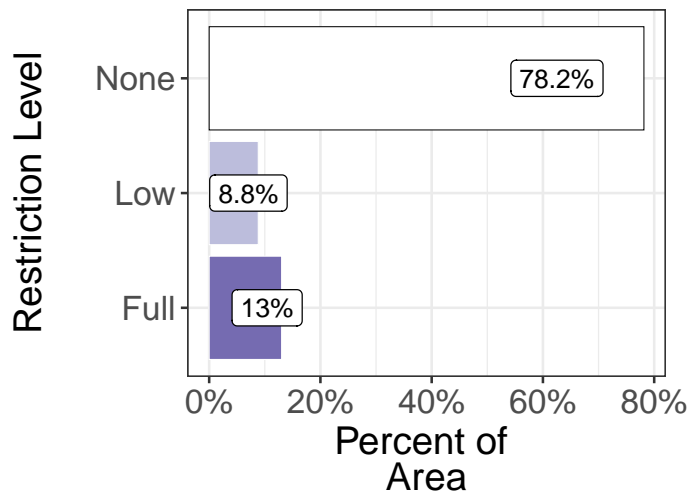
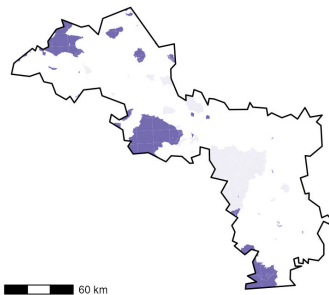


Cascades Natural Resource District

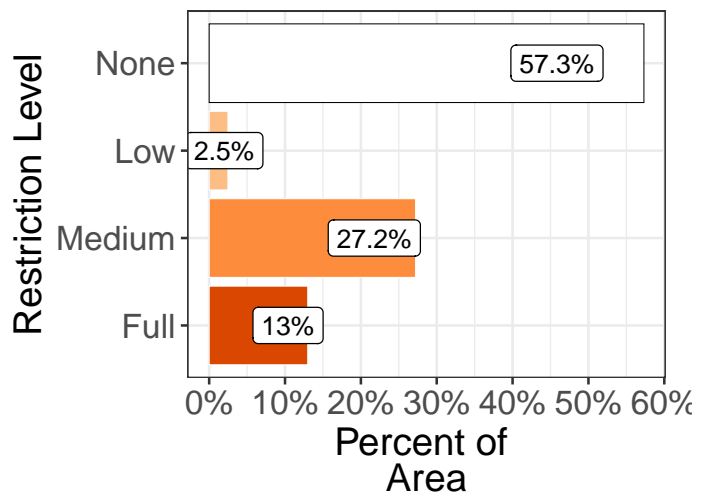
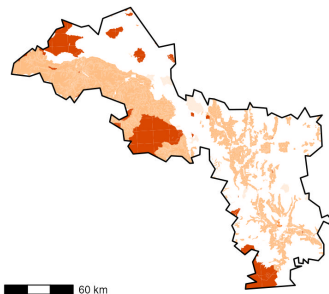
Forestry (2022)



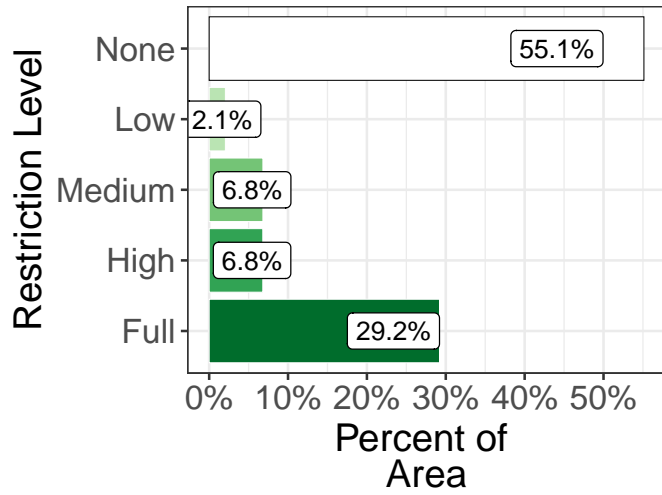
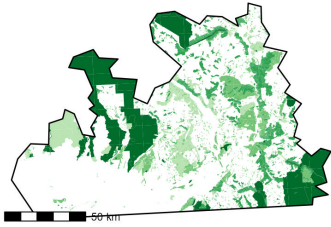
Mining (2022)



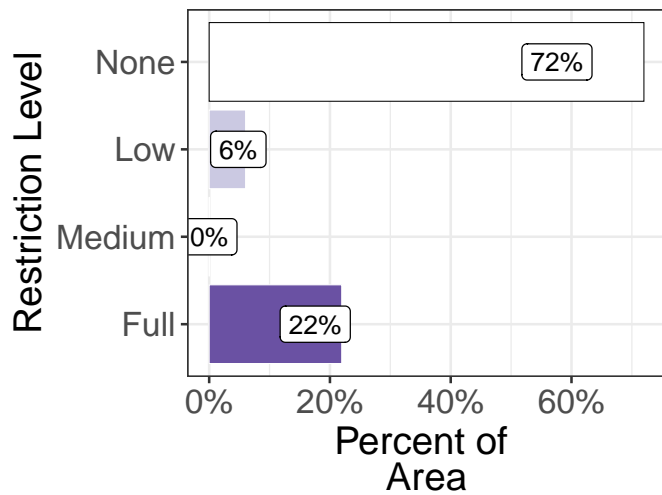
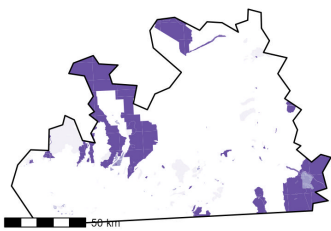
Oil and Gas (2022)



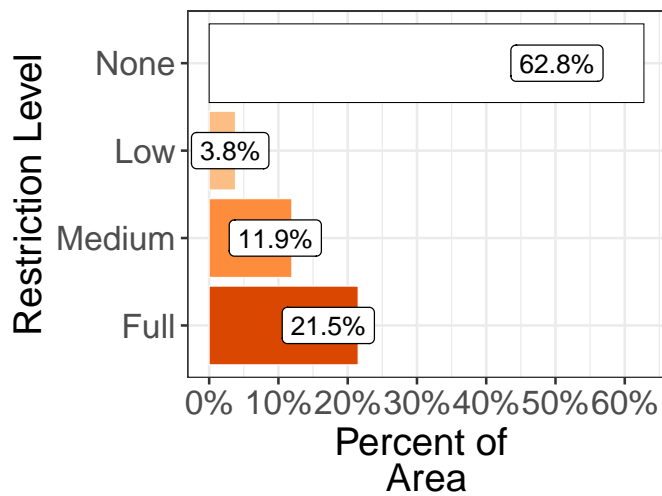
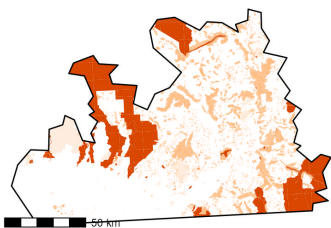
Chilliwack Natural Resource District  
Forestry (2022)



Mining (2022)

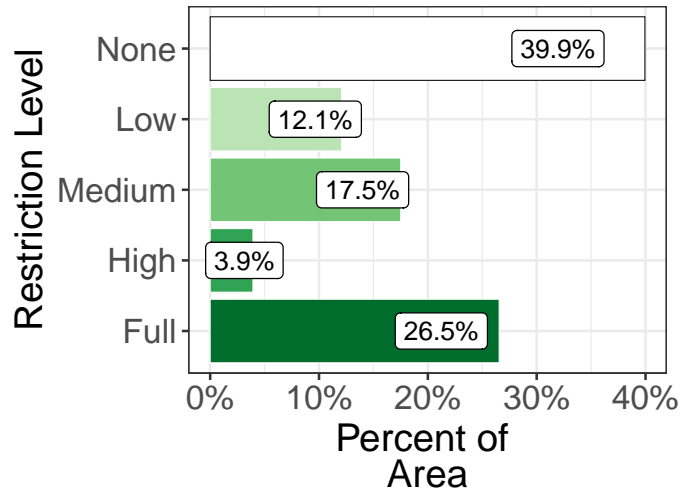
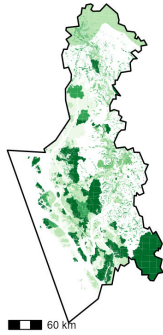


Oil and Gas (2022)

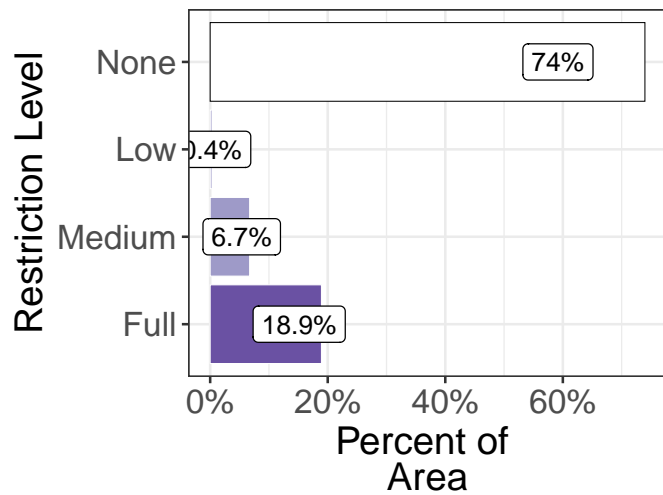
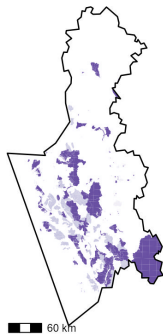


Coast Mountains Natural Resource District

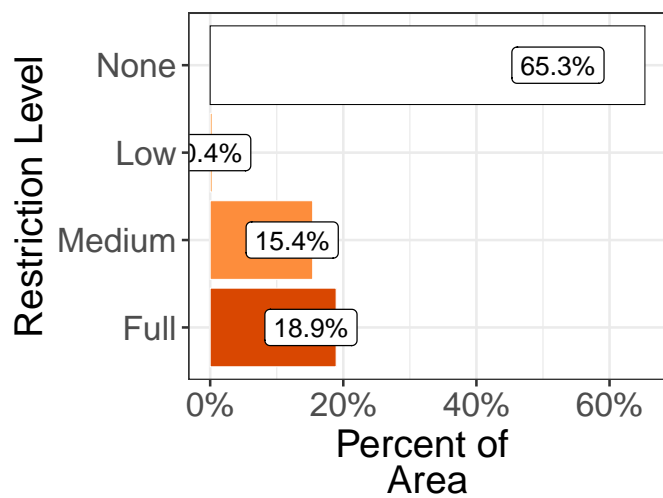
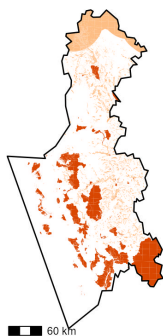
Forestry (2022)



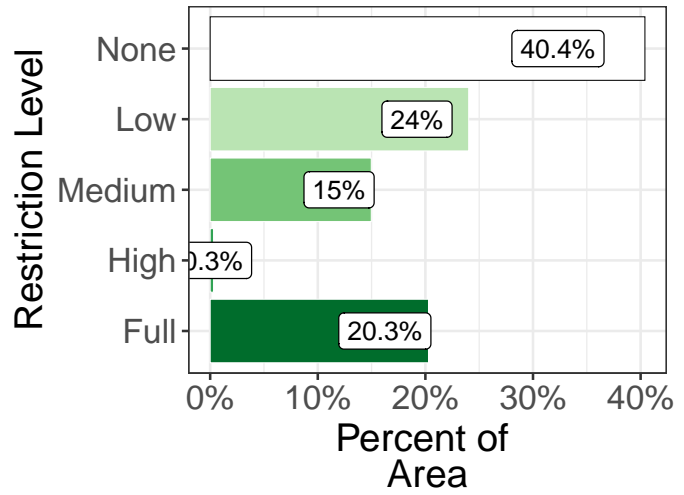
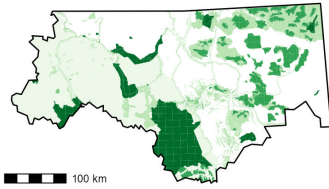
Mining (2022)



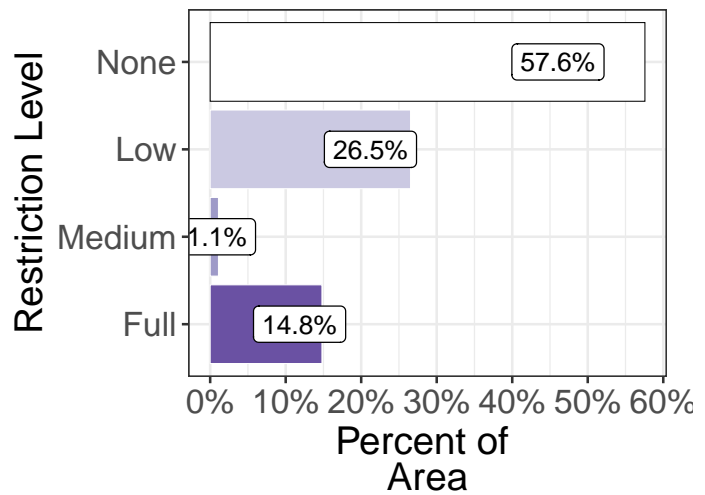
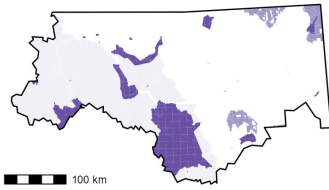
Oil and Gas (2022)



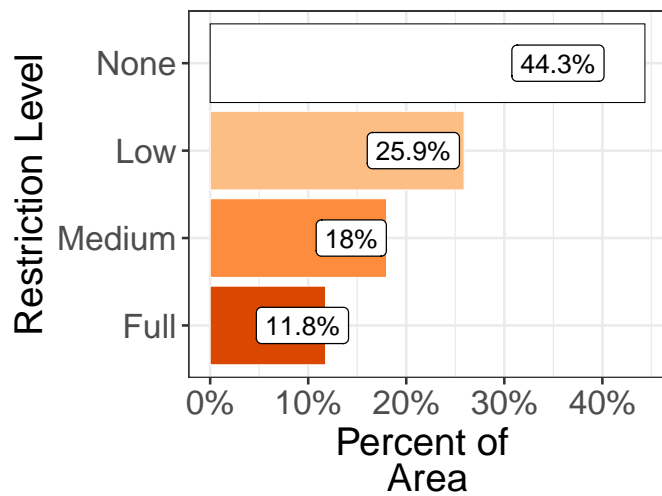
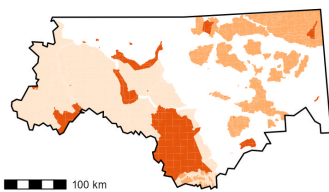
Fort Nelson Natural Resource District  
Forestry (2022)



Mining (2022)

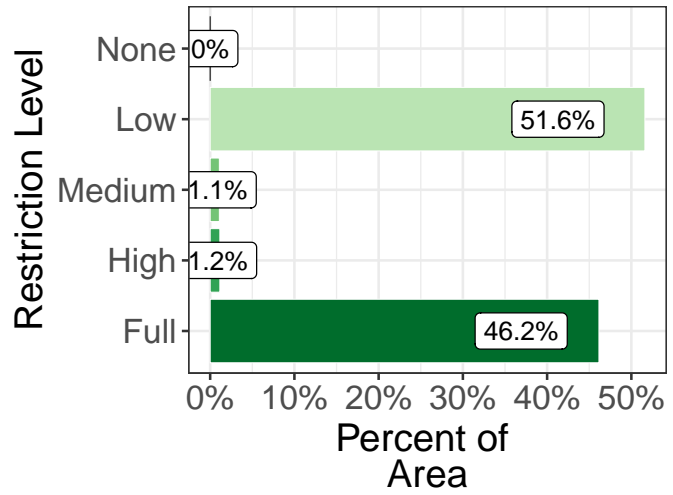
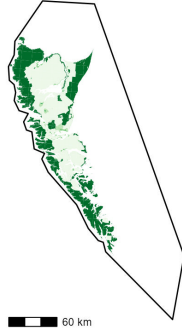


Oil and Gas (2022)

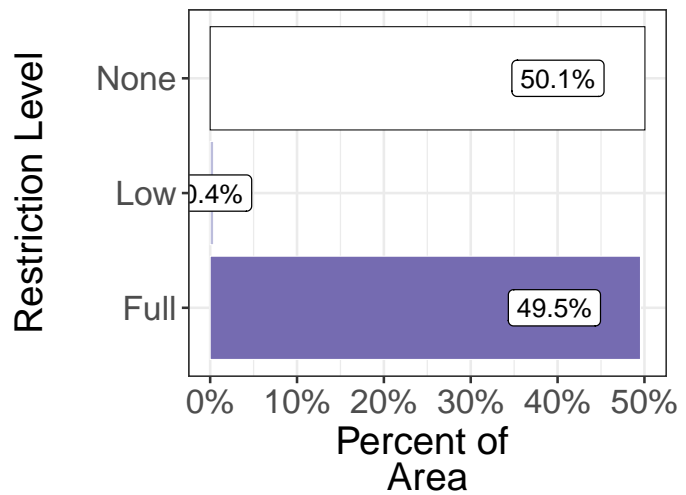
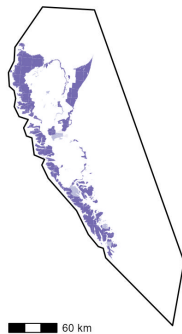


Haida Gwaii Natural Resource District

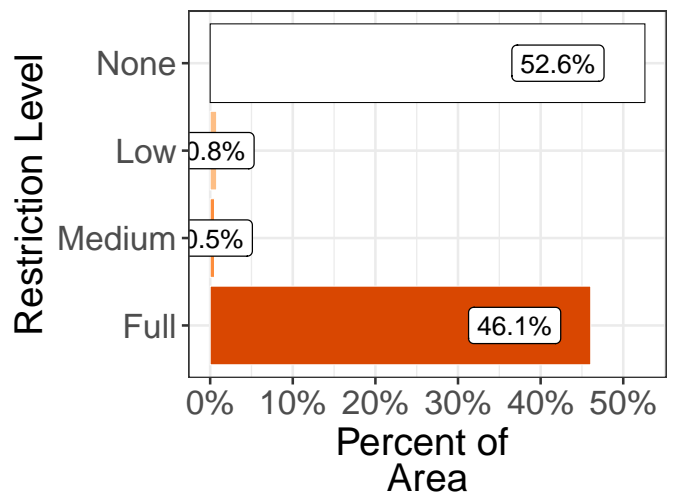
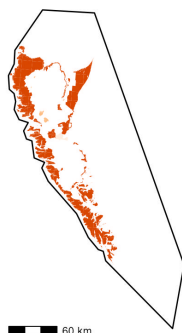
Forestry (2022)



Mining (2022)

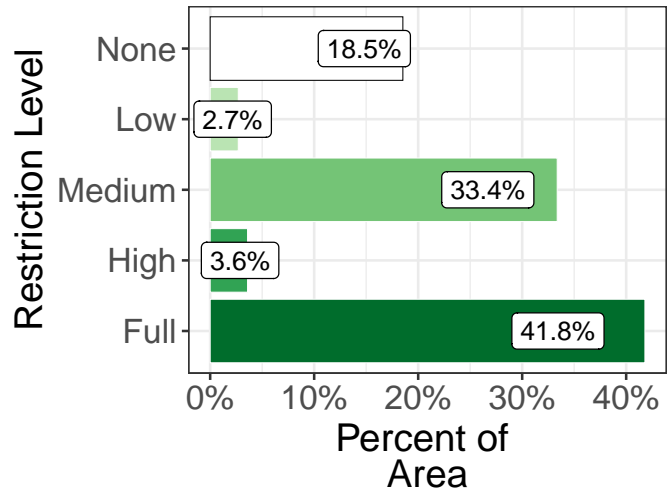
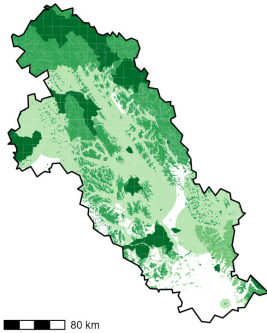


Oil and Gas (2022)

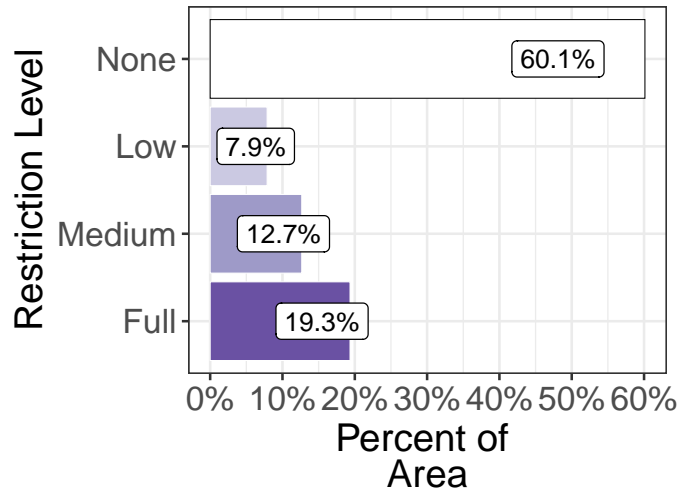
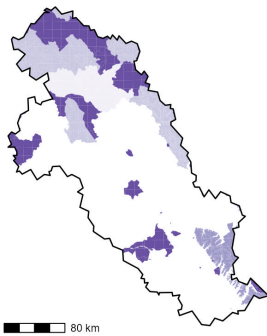


Mackenzie Natural Resource District

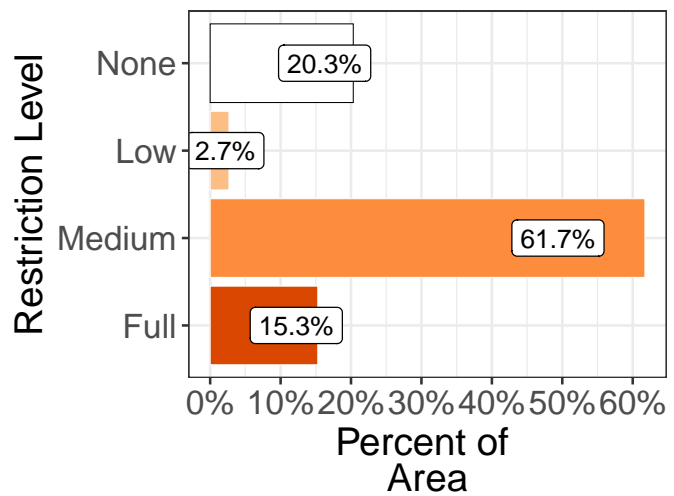
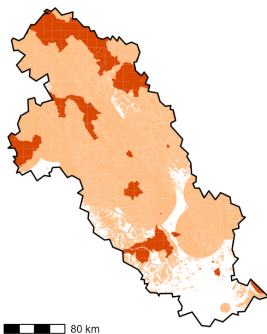
Forestry (2022)



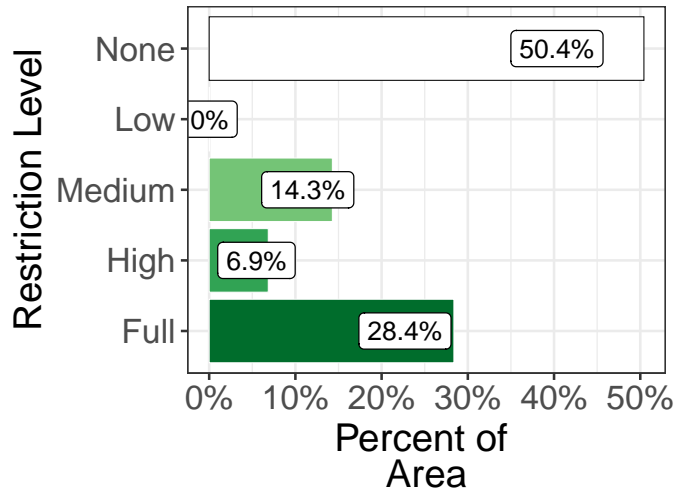
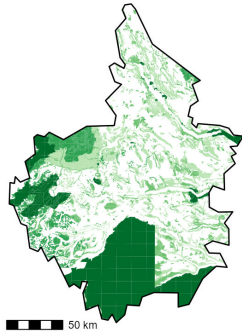
Mining (2022)



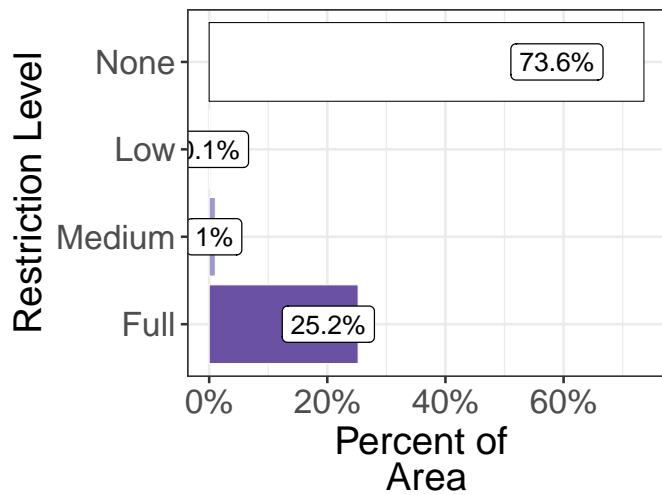
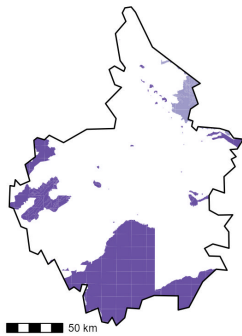
Oil and Gas (2022)



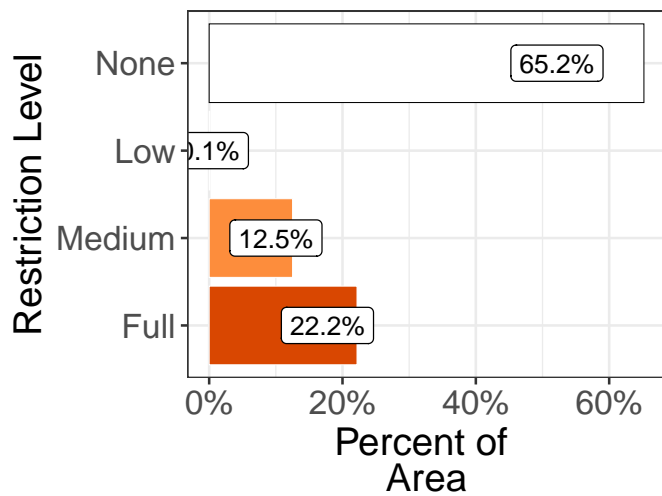
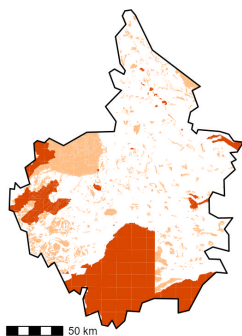
Nadina Natural Resource District  
Forestry (2022)



Mining (2022)

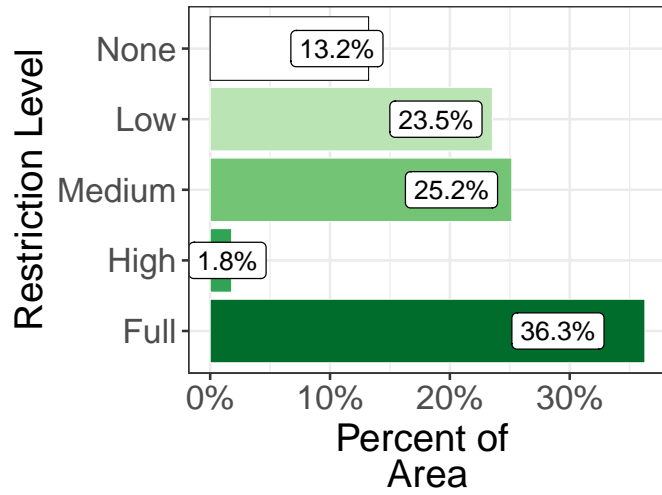
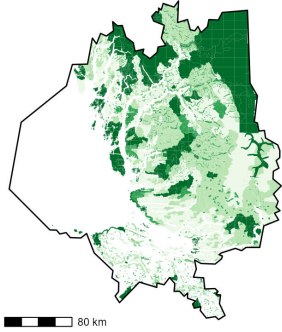


Oil and Gas (2022)

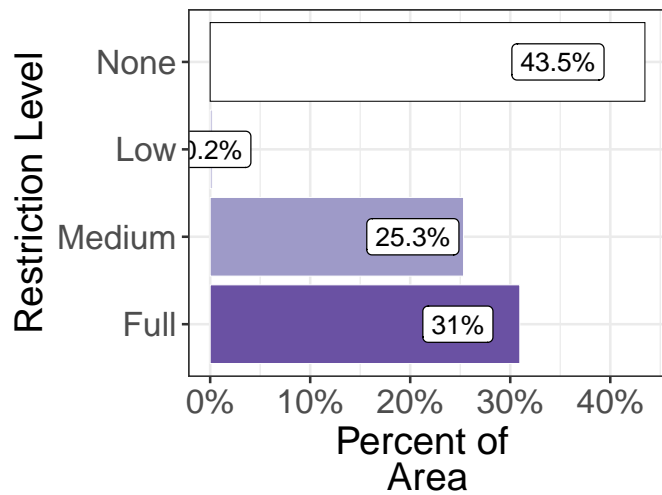
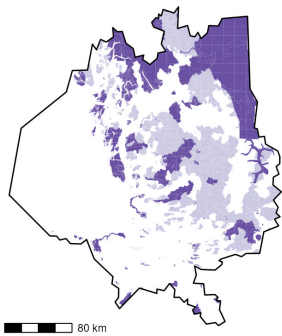


North Island – Central Coast Natural Resource District

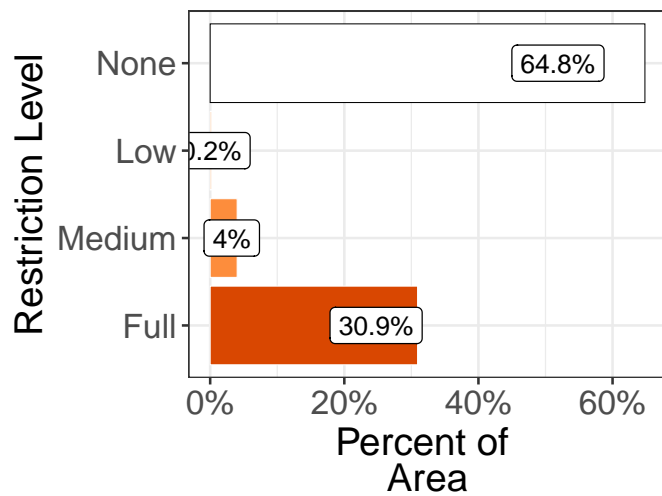
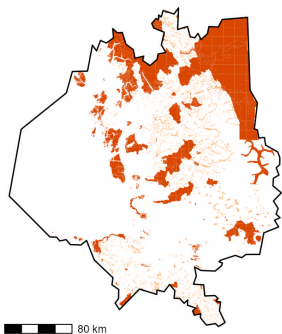
Forestry (2022)



Mining (2022)



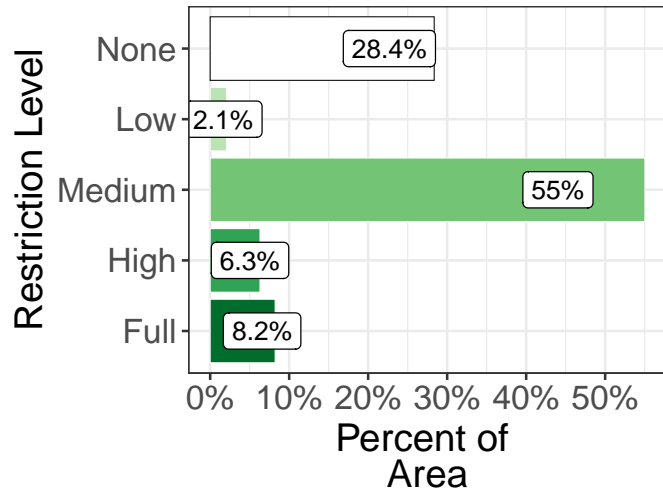
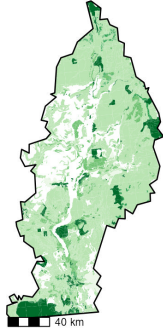
Oil and Gas (2022)



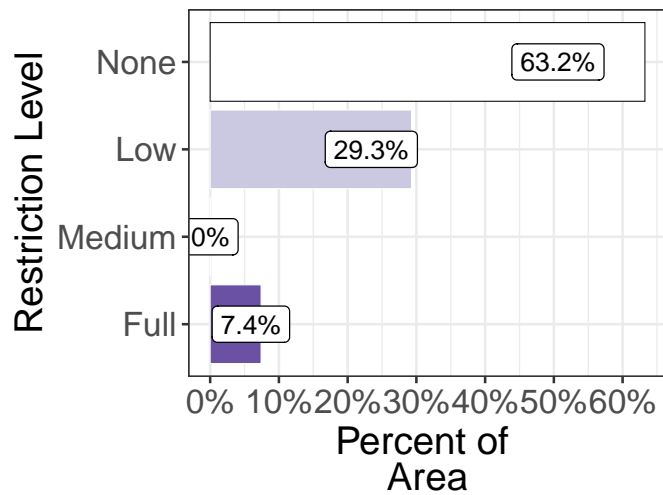


Okanagan Shuswap Natural Resource District

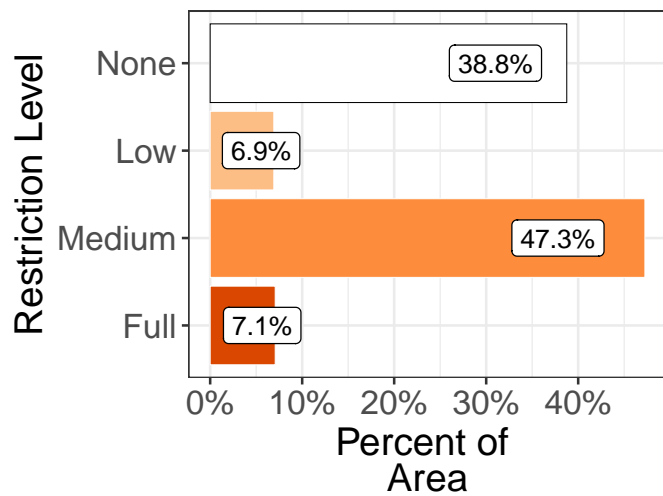
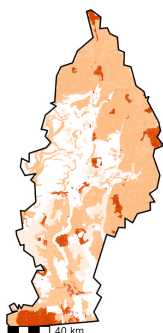
Forestry (2022)



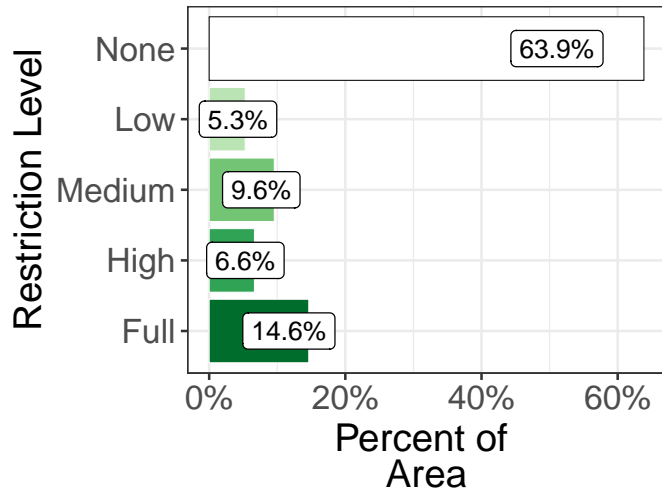
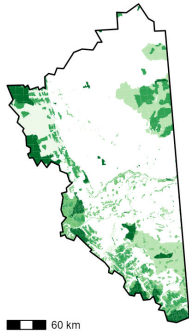
Mining (2022)



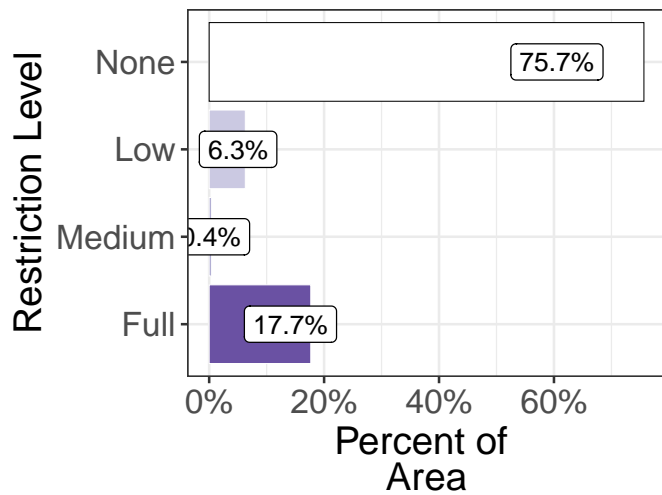
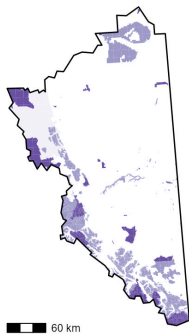
Oil and Gas (2022)



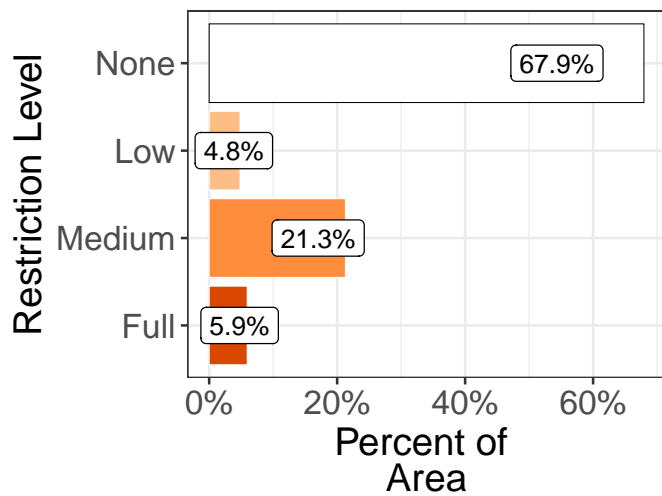
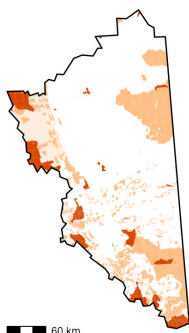
Peace Natural Resource District  
Forestry (2022)



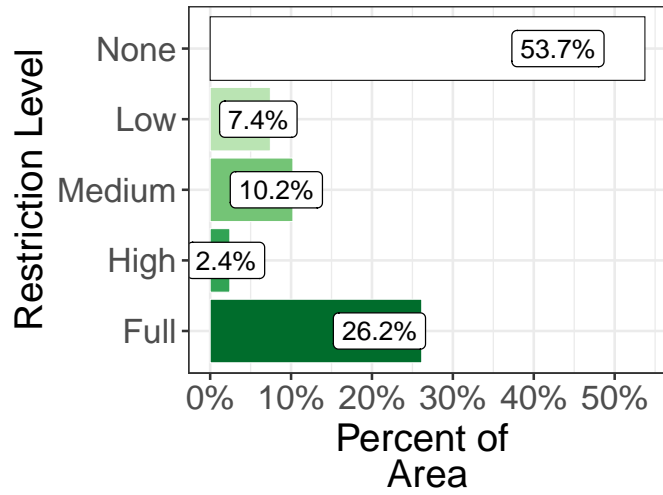
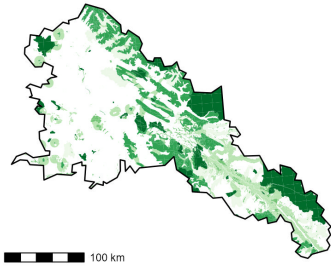
Mining (2022)



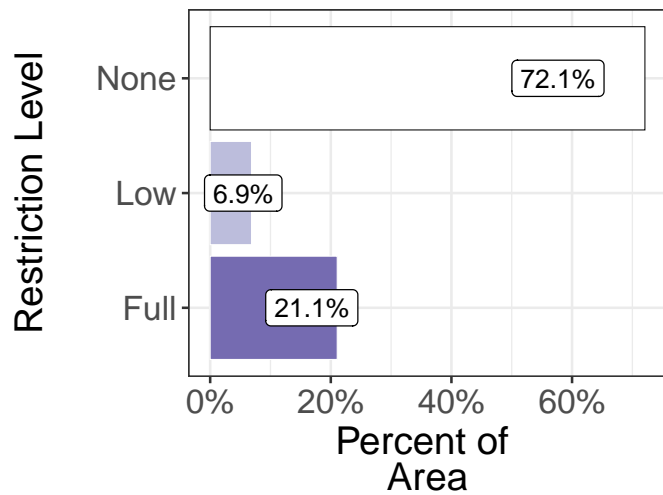
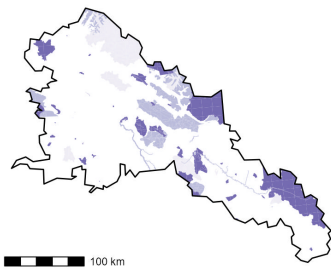
Oil and Gas (2022)



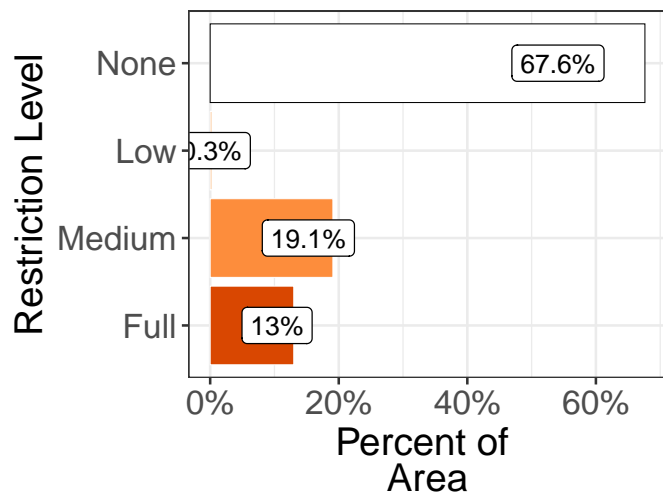
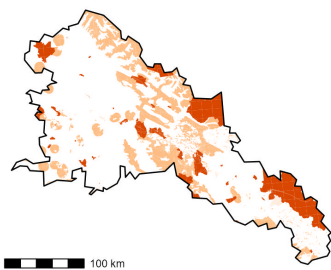
Prince George Natural Resource District  
Forestry (2022)



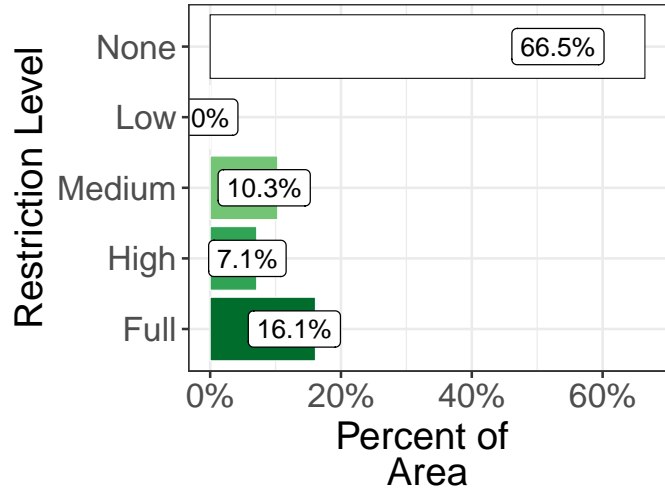
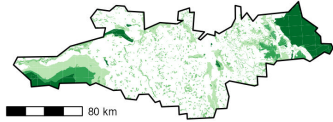
Mining (2022)



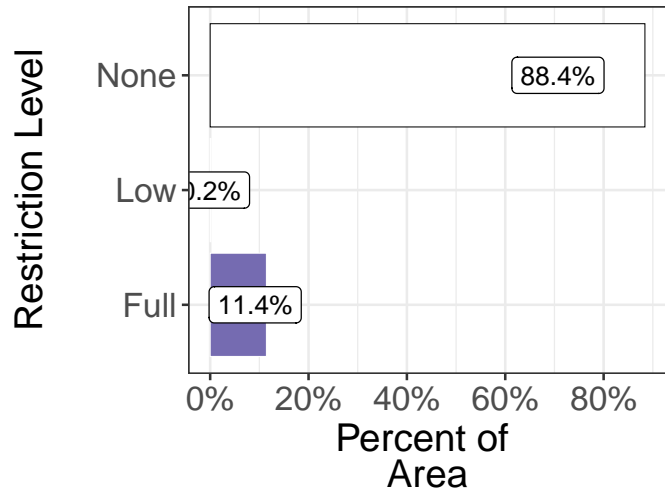
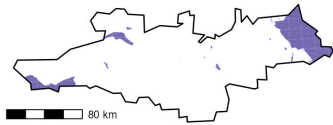
Oil and Gas (2022)



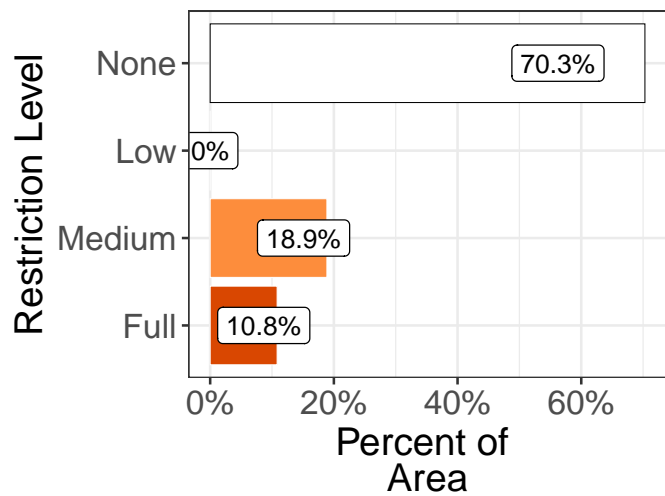
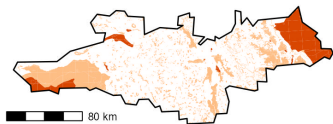
Quesnel Natural Resource District  
Forestry (2022)



Mining (2022)

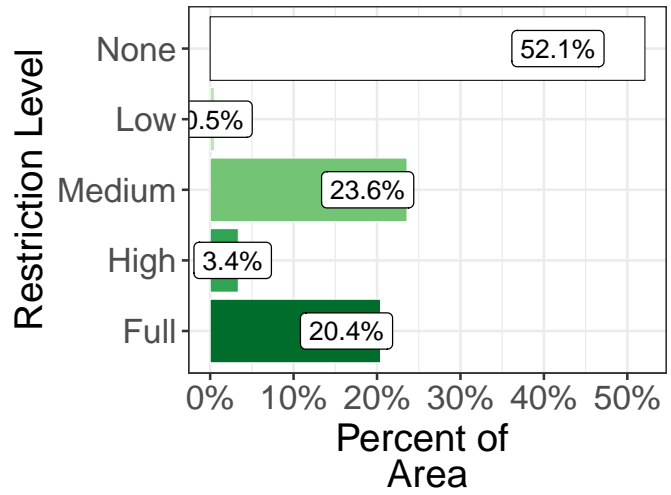
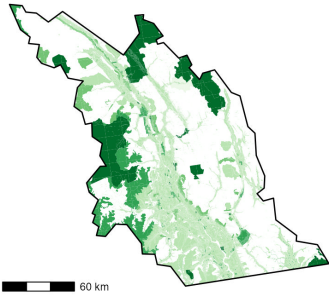


Oil and Gas (2022)

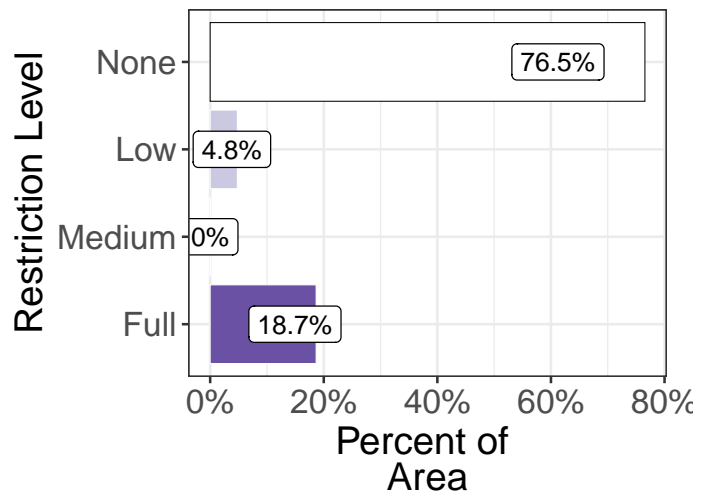
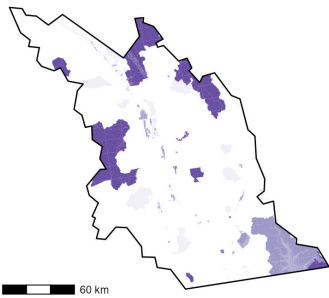


Rocky Mountain Natural Resource District

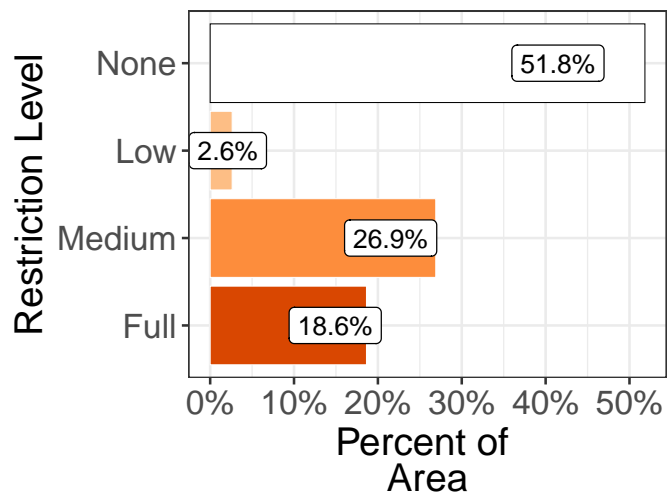
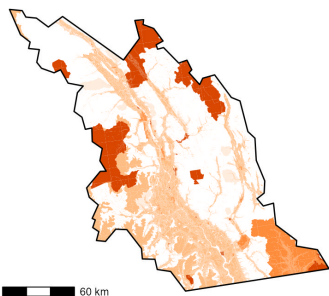
Forestry (2022)



Mining (2022)

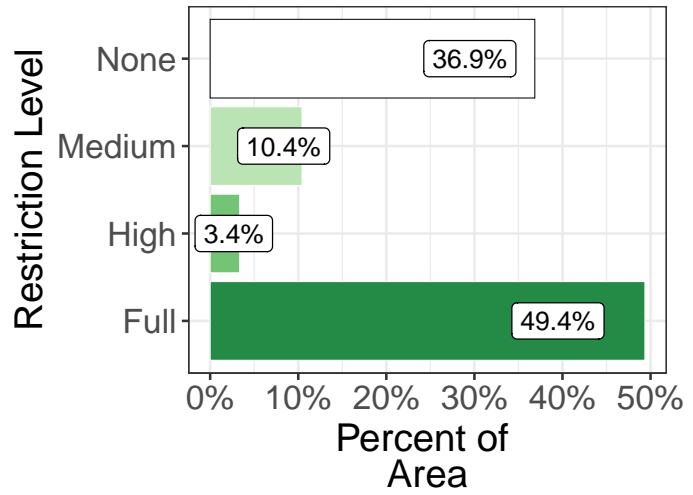
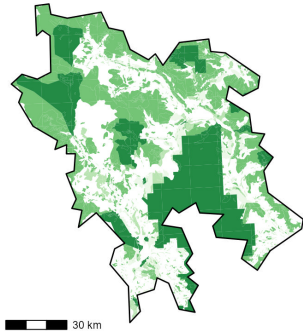


Oil and Gas (2022)

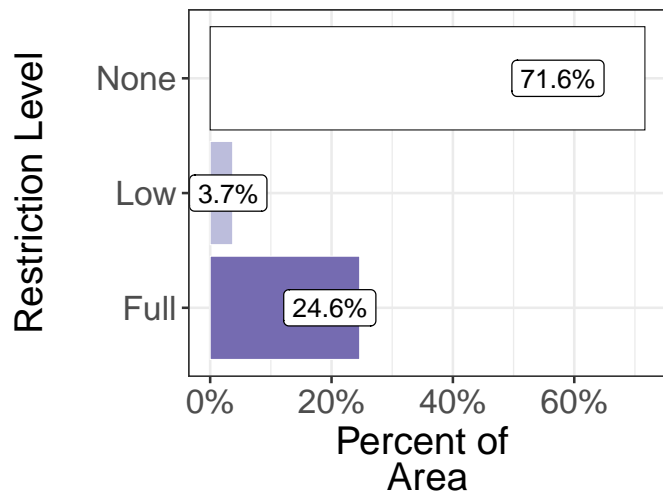
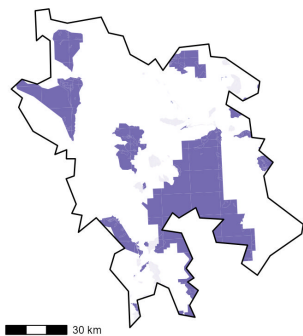


Sea to Sky Natural Resource District

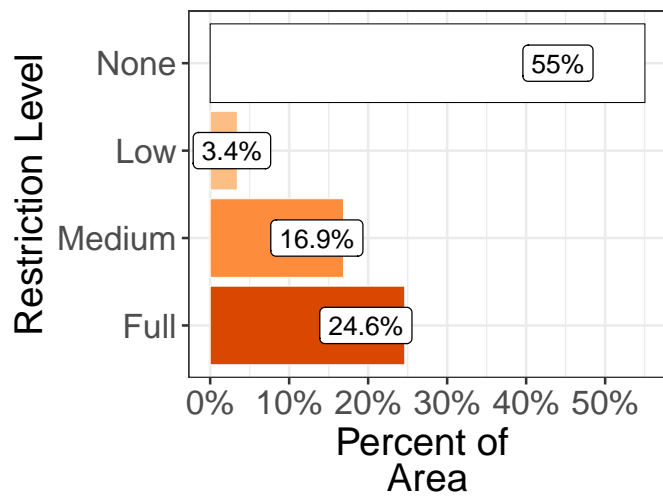
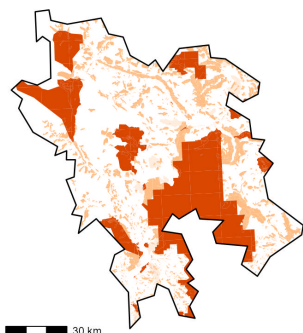
Forestry (2022)



Mining (2022)

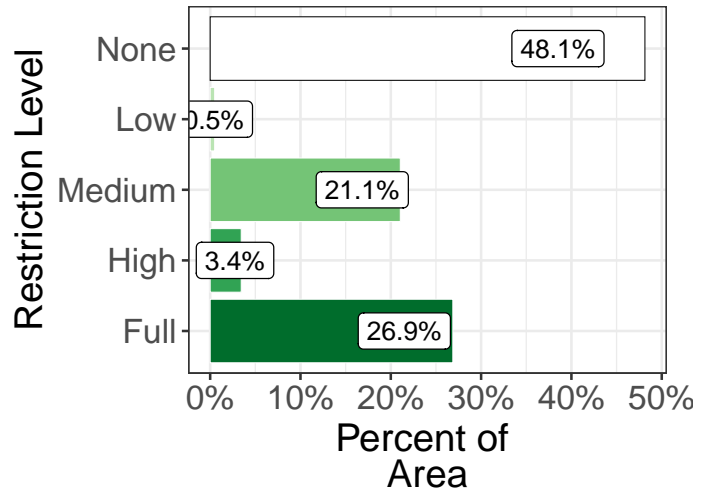
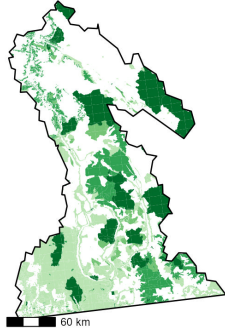


Oil and Gas (2022)

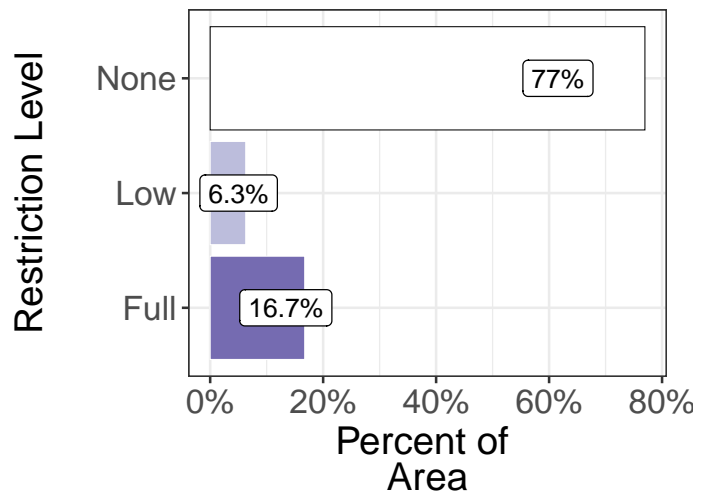
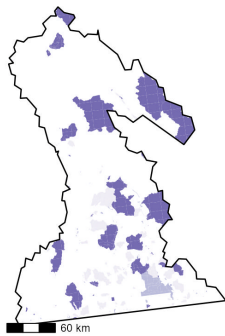


Selkirk Natural Resource District

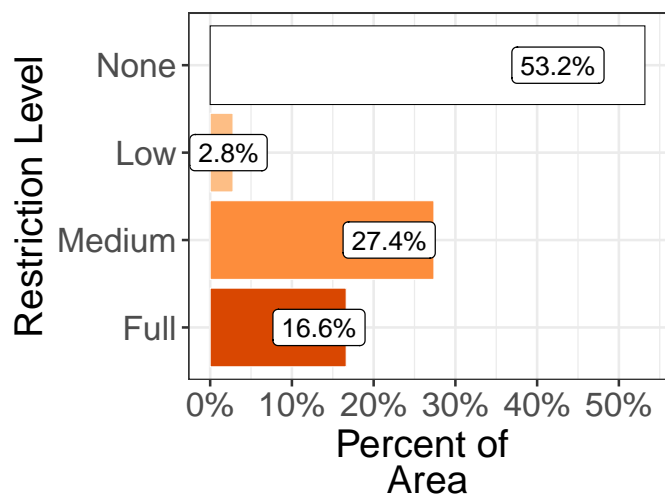
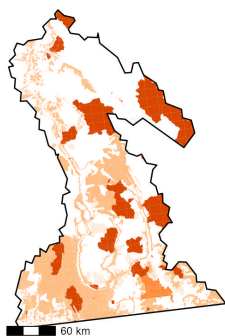
Forestry (2022)



Mining (2022)

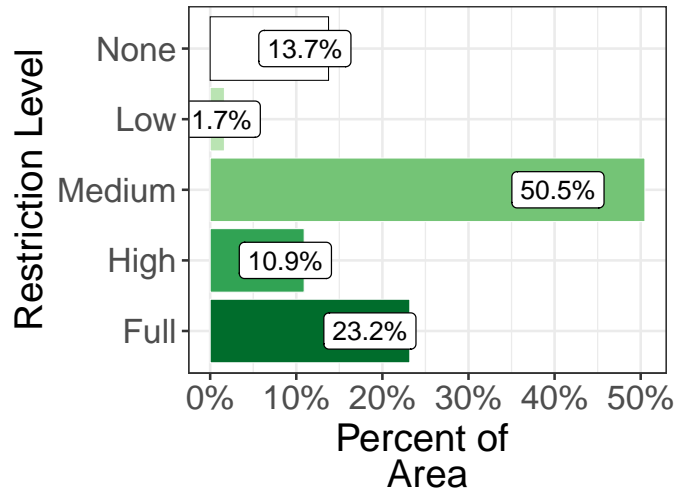
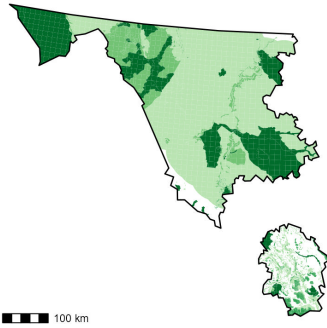


Oil and Gas (2022)

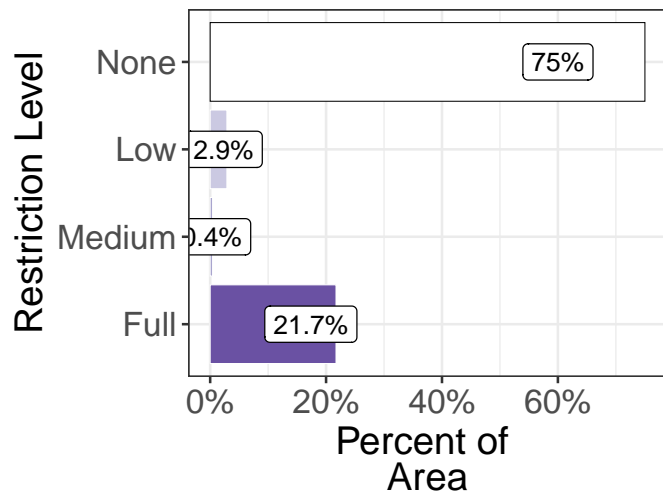
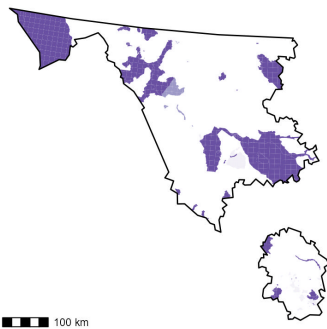


Skeena Stikine Natural Resource District

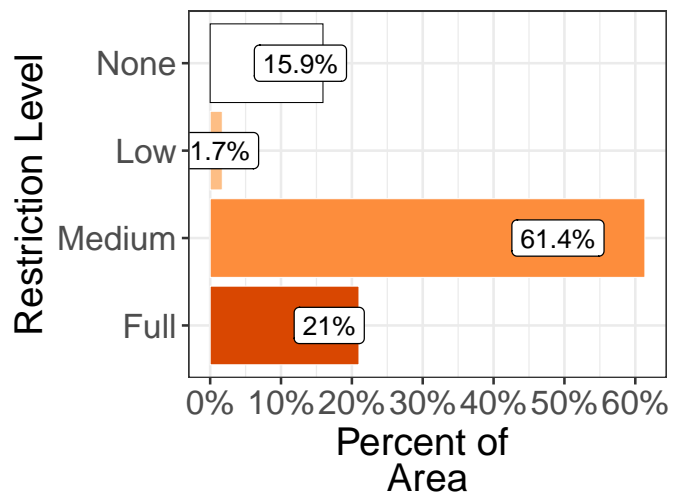
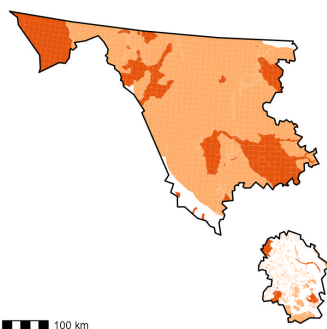
Forestry (2022)



Mining (2022)

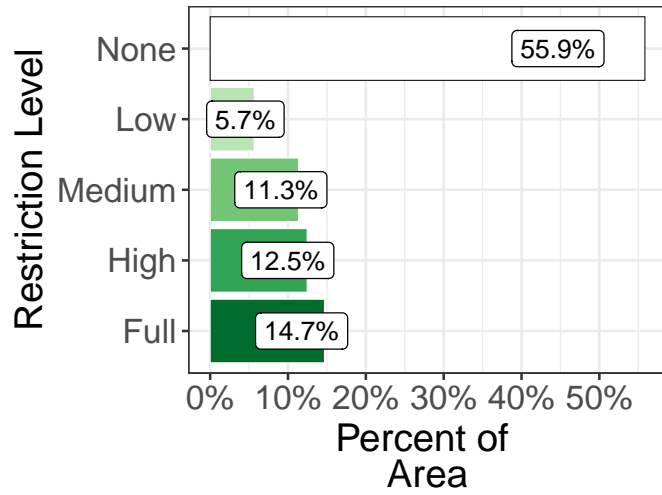
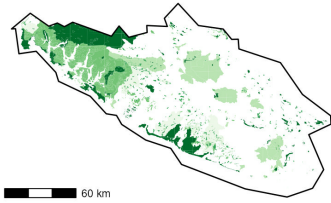


Oil and Gas (2022)

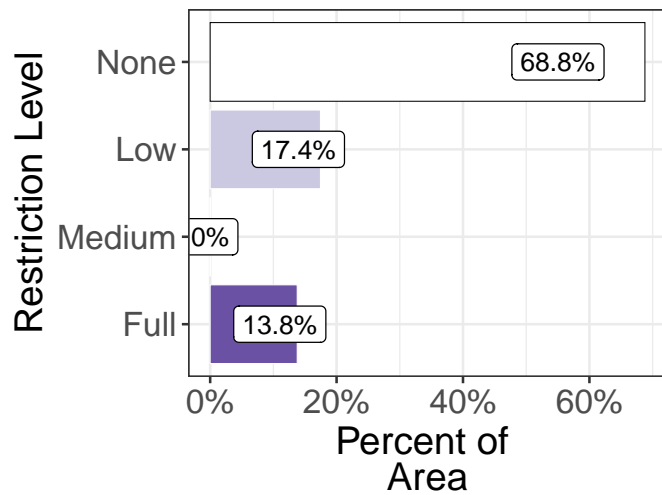
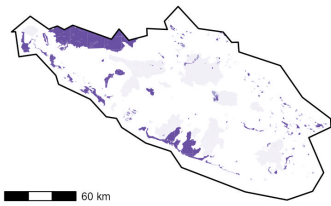




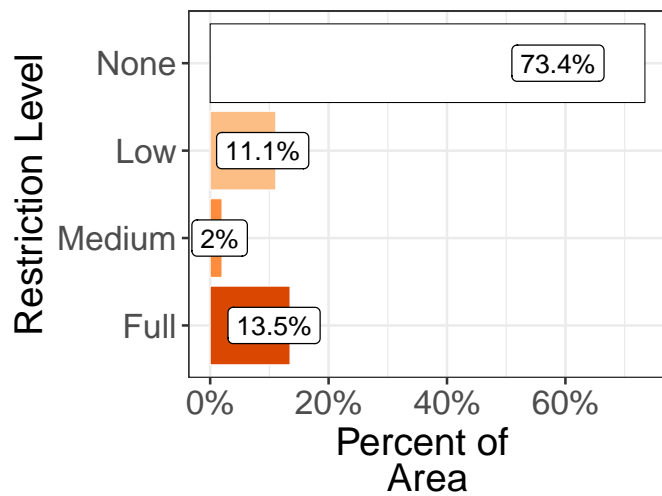
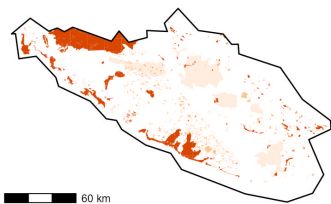
South Island Natural Resource District  
Forestry (2022)



Mining (2022)

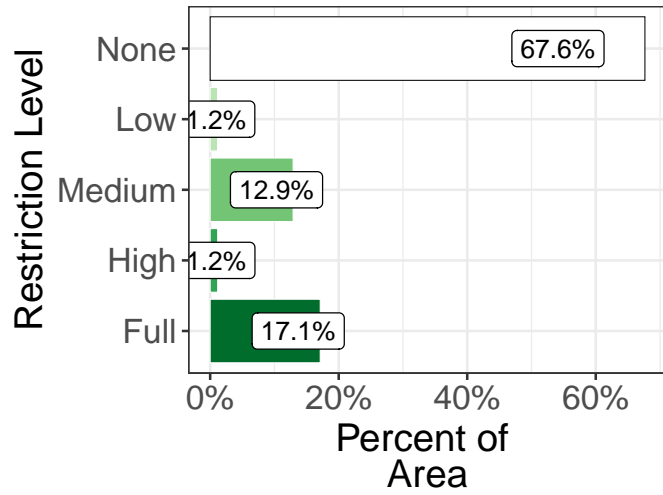
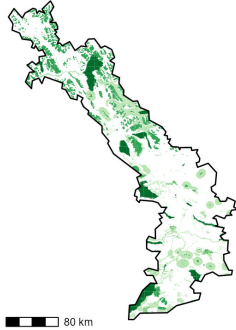


Oil and Gas (2022)

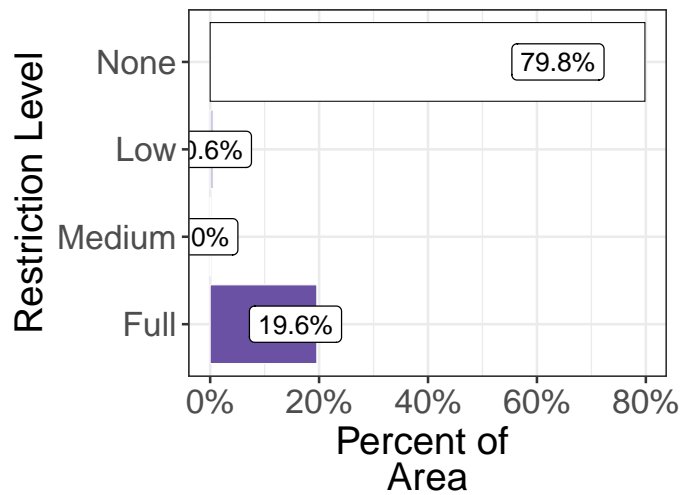
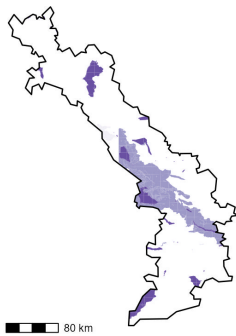


Stuart Nechako Natural Resource District

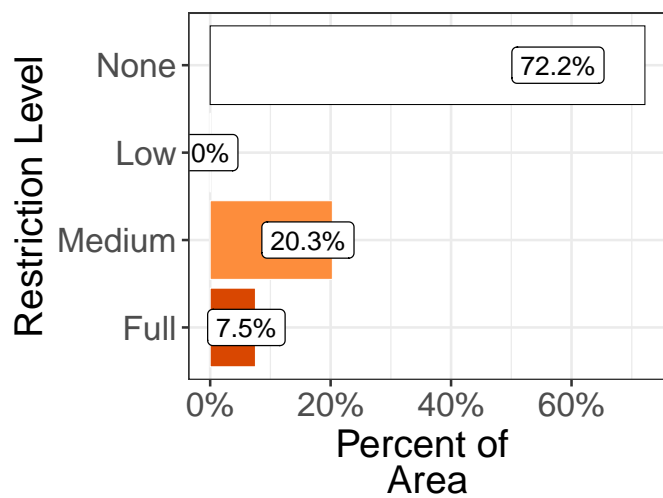
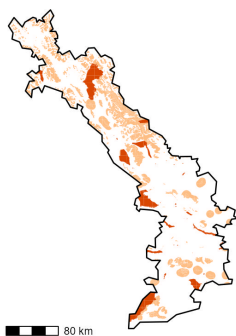
Forestry (2022)



Mining (2022)

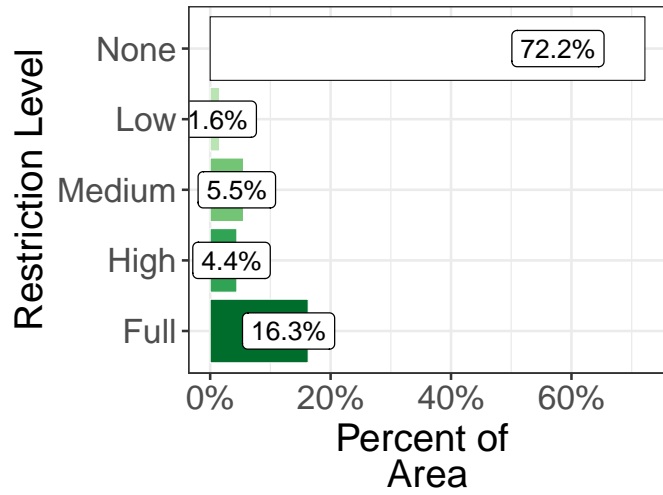
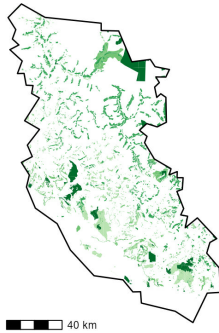


Oil and Gas (2022)

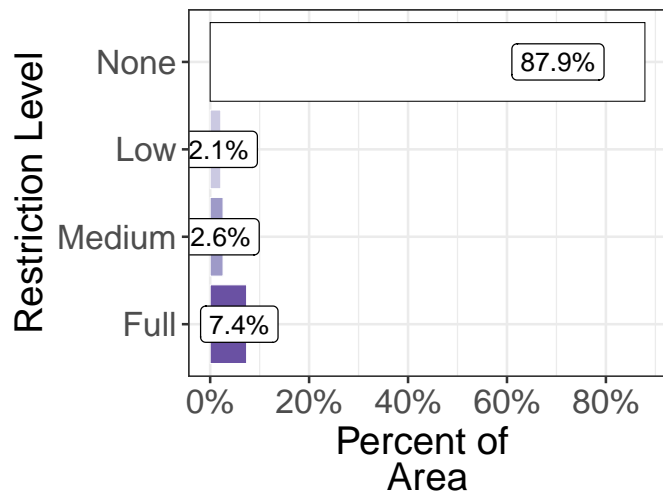
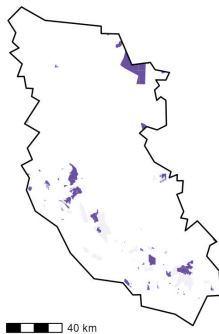


Sunshine Coast Natural Resource District

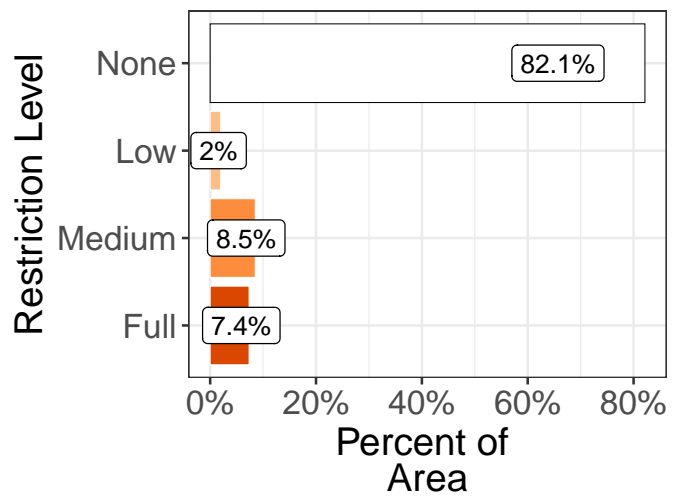
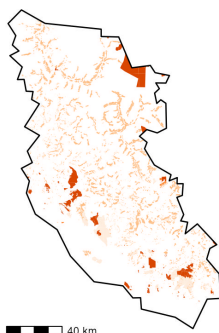
Forestry (2022)



Mining (2022)

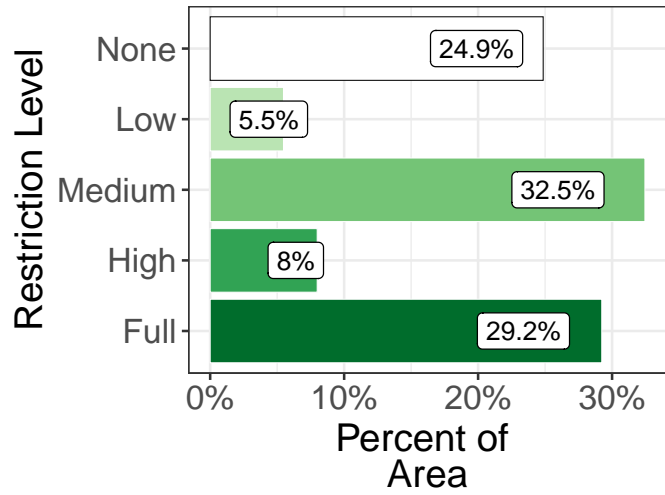
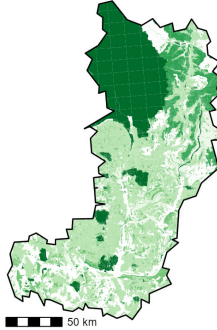


Oil and Gas (2022)

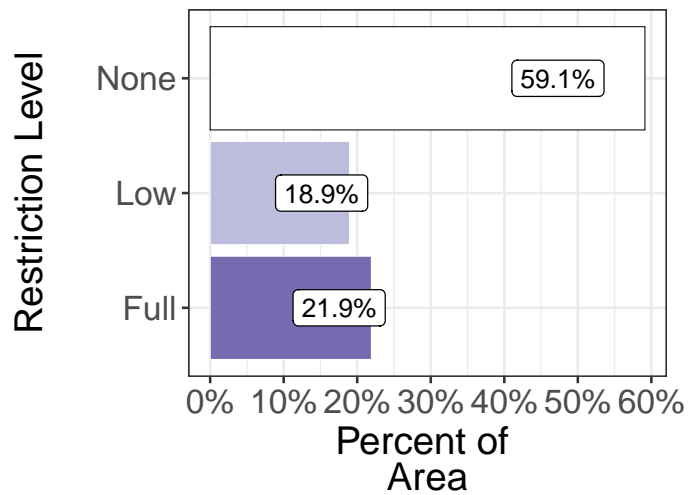
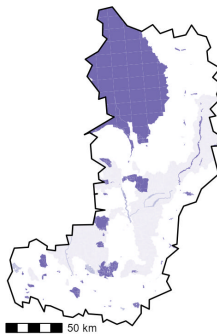


Thompson Rivers Natural Resource District

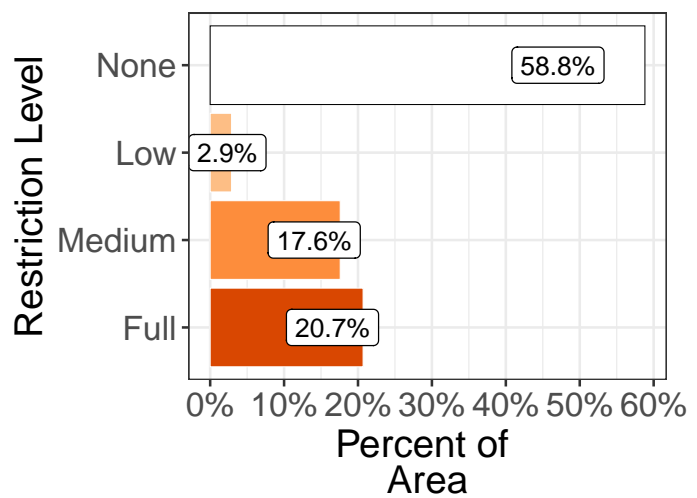
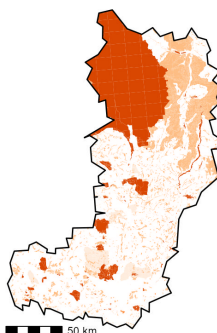
Forestry (2022)



Mining (2022)



Oil and Gas (2022)



## Details of Land Designations that Contribute to Conservation

- **Protected Lands (15.4%)**
- Includes **Parks & Protected Areas (15.0%)**, designations enacted in legislation with a *primary* purpose of the *long-term* conservation of nature and cultural values *and* that are administered by a government parks and protected areas agency ([BC Parks](#) and [Parks Canada](#)). Municipal and regional parks and water supply areas are not included in the analysis at this time.
- Includes **Other Protected Lands (0.4%)**, such as B.C.'s non-governmental organization conservation areas or private conservation lands. These are designations and lands administered or owned by a [non-governmental conservation organization](#) and managed for the long-term conservation of wildlife habitat values.
- Other Protected Lands also includes designations enacted in legislation with a primary purpose of the long-term conservation of biodiversity and/or ecosystem services, such as National Wildlife Areas and Migratory Bird Sanctuaries, both designated by the Government of Canada, and [Wildlife Management Areas](#) designated under the provincial [Wildlife Act](#).
- **Resource Exclusion Areas (12.4%)**
- Includes designations excluding one or two resource activities—such as forestry, mining or large-scale hydro-electric development—for the purpose of conservation.
- The excluded resource activity is often a primary threat to biodiversity in the established area, making the designation an important contribution to conservation.
- Some examples include designations such as no-harvest [Wildlife Habitat Areas](#) designated under the [Forest and Range Practices Act](#), [Grizzly Bear Habitat \(Class 1\)](#) designated under the [Land Act](#), and the [Sea to Sky Wildland Areas](#) designated under the [Environment and Land Use Act](#).
- **Spatially Managed Areas (24.5%)**
- Includes spatial designations managing or limiting development or a resource activity—such as forestry, mining or large-scale hydro-electric development—for the purpose of conservation, or a spatially-defined management regime in place to preserve specified elements of biodiversity but where activity is still allowed to occur.
- Some examples include designations such as conditional-harvest [Wildlife Habitat Areas](#), conditional-harvest [Ungulate Winter Range](#), and [Visual Quality Objectives](#)—all designated under the [Forest and Range Practices Act](#)—and Important Fisheries Watersheds and other [legal objectives established for the the Great Bear Rainforest](#) under the [Land Act](#).

The complete list of included land designations, category information, data sources, and data licence details is [available in CSV format](#). Some designations were not included at this time due to a lack of a public, authoritative data source. These will be added to the analysis as they become available.

## Methods

Overlaps among land designations have been accounted for in the analysis. While B.C. does use aspatial land management tools, this indicator only reports on *legal, spatially-defined* areas that contribute to conservation. The analysis presents the current status of land designations and the intended contribution to conservation—the effectiveness of land designations has not been evaluated. The [Python](#) and [R](#) code for repeating the analysis and data visualizations presented on this page is available on [GitHub](#).

## References and Other Useful Links

- [Learn more about Protected Lands & Waters in B.C.](#)
- [BC Parks](#)

- B.C. Government Conservation Lands
- British Columbia Non-Governmental Organization Conservation Areas Summary Report 2015-2016
- B.C. Crown Land

## Data

\*By accessing these datasets, you agree to the licence associated with each file, as indicated in parentheses below.

- [Indicator Summary Data: Land Designations that Contribute to Conservation in B.C.](#) (Licence: [Open Government Licence - British Columbia](#))
- [Land Designations that Contribute to Conservation in B.C. - Spatial Data](#) (Licence: [Open Government Licence - British Columbia](#))
- [Ecoregions - Ecoregion Ecosystem Classification of British Columbia](#) (Licence: [Open Government Licence - British Columbia](#))
- [Biogeoclimatic Ecosystem Classification \(BEC\) Map](#) (Licence: [Open Government Licence - British Columbia](#))

Published and Available On-Line at Environmental Reporting BC (November 2017): <http://www.env.gov.bc.ca/soe/indicators/land/land-designations.html>

Email correspondence to: [envreportbc@gov.bc.ca](mailto:envreportbc@gov.bc.ca)